

P.A.P. Consulting Engineers

Architecture-Urban Design-Civil-HVACR

2007 / ۱۳۸۶



اصطلاح یونانی **Areté** (آرته) یکی از اصطلاحات کلیدی فلسفه افلاطون است. در زبان فلسفی افلاطون «آرته» هر چیز، حد اعلی و حد اکمل خاصیت اصلی آن چیز است؛ خاصیتی که از هر چیز انتظار آن را داریم؛ خاصیتی که ارزش و شرافت یک چیز بسته به وجود آن است؛ خاصیتی که چیزی اگر فاقد آن باشد، دیگر «آن چیز» به معنی واقعی آن، نیست. اینجاست که هر چیز به همان نسبت که کاملتر و به ایده اش نزدیکتر باشد، «آرته» در آن بیشتر و قویتر است.

مهندسین مشاور پارس آرته پرداز  
معماری - شهرسازی

NO.6, PARDIS BLDG., ORDIBEHESHT ST.,  
SHIRAZ, FARS, I.R. IRAN  
P.O. BOX 71967-47377  
TEL: +98 (71) 32 34 57 29  
EMAIL: INFO@PAPCE.COM  
OFFICIAL WEBSITE: [WWW.PAPCE.IR](http://WWW.PAPCE.IR)

شیراز / خیابان اردیبهشت / حد فاصل ۲۰ متری سینما سعدی و فلسطین / ساختمان پردیس / طبقه سوم  
کد پستی: ۷۱۳۴۷-۵۴۸۷۷      تلفن / فکس: ۰۷۱-۳۲ ۳۴ ۵۷ ۲۹



P.A.P. Consulting Engineers

# BACKGROUND

Architectural Portfolio



## مشخصات شرکت مهندسين مشاور پارس آرته پرداز (با مسئوليت محدود)

هسته مرکزی شرکت، فعالیت حرفه ای خود را در سال ۱۳۸۱، با همکاری با دفتر معماری مهندس مهرداد ایروانیان در رشته ساختمان آغاز کرد و فعالیت متمرکز خود را طی مدت زمان ۵ سال در پروژه های مختلف در سطح شهرستان شیراز با همکاری دفتر معماری مذکور و همچنین به صورت مجزا ادامه داد. این روند طی سال های ۸۳-۸۴، با همکاری در گروه طراحی در دفتر معماری دکتر محمد علی آبادی و همچنین طی بازه زمانی پائیز ۸۶ - بهار ۸۷ با همکاری با معاونت مهندسی نیروی انتظامی استان فارس همراه گردید. نهایتاً در سال ۱۳۸۶ ادامه فعالیت های حرفه ای مذکور طی سازماندهی مجزا در غالب شرکت مهندسين مشاور پارس آرته پرداز تحت شماره ثبت ۲۲۶۶۲ ادامه یافت.



سوابق همکاری در پروژه ها و عملیات ها ی اجرایی در رسته ساختمان و شرح خدمات مشاوره ارائه شده طی سال های ۸۱ تا به امروز، به تفصیل معرفی می گردد؛

### فعالیت ها طی همکاری با دفتر معماری مهرداد ابروآنیان

- منزل مسکونی شماره ۶: فعالیت به عنوان مسئول کارگاه، مرداد ۸۲ - مهر ۸۲
- مشارکت در طراحی ها در دفتر شرکت فولاد گذر، اردیبهشت ۸۳ - شهریور ۸۳
- همکاری به عنوان ناظر بر کلیه عملیات ساختمانی جاری در منطقه جبل الدراک شیراز، نیمه دوم سال ۸۳
- پارک اندیشه صدرا: فعالیت به عنوان ناظر مقیم، اردیبهشت ۸۴ - آذر ۸۴
- Supervision on construction of *Andisheh Park*, May 2005-Dec 2005
- مجتمع مسکونی کوثر: فعالیت به عنوان سرپرست گروه نظارت مقیم، دی ۸۴ - اردیبهشت ۸۵
- Supervision on construction of *Kosar Housing Complex*, Jan 2006-May 2006
- برج های مسکونی طلوع: فعالیت به عنوان سرپرست گروه نظارت مقیم، دی ۸۵ - تیر ۸۶
- Supervision on construction of *Toloo Residential Tower*, Jan 2007-July 2007

### فعالیت ها طی همکاری در گروه طراحی در دفتر معماری محمد علی آبادی

- مجتمع مسکونی فرهنگ شهر: مشارکت در طراحی، پاییز ۸۳
- Participated in designing *Farhangshahr Housing Complex*, Fall 2004
- پارک پارسی مرودشت (پارک ملت): مشارکت در طراحی، پاییز ۸۳
- Participated in designing *Marvdasht Pars Park (Melat Park)*, Fall 2004
- باغ شهدای گمنام مرودشت: مشارکت در طراحی، پاییز ۸۳
- Participated in designing *Marvdasht Unknown Martyrs Park*, Fall 2004
- طراحی خدمات پشتیبانی بازار نو (منطقه موردستان): مشارکت در طراحی، پاییز ۸۳
- Participated in designing *Moordestan Region (Bazar e No Shiraz)*, Fall 2004
- ساختمان مرکزی جمعیت حلال احمر استان فارس: مشارکت در طراحی، زمستان ۸۳
- Participated in designing *Helal e Ahmar Central Bldg.*, Winter 2005
- مجتمع فرهنگی-توریستی داوز: مشارکت در طراحی، زمستان ۸۳
- Participated in designing *Davoos Cultural-Tourist complex*, Winter 2005
- مجموعه تفریحی-ورزشی کوهگشت صدرا: مشارکت در طراحی، زمستان ۸۳
- Participated in designing *Sadra Koohgasht athletic-recreational complex*, Winter 2005
- دهکده اقامتی-تفریحی-ورزشی مانوش صدرا: مشارکت در طراحی، تابستان ۸۴
- Participated in designing *Manoosh athletic-recreational complex*, Summer 2005

## فعالیت های مجزا

- طراحی و اجرای غرفه شرکت **Maxxonet** در نمایشگاه بین المللی کامپیوتر و انفورماتیک شیراز، آذر ۸۳
- Designing the Pavilion of *Maxxonet Co.* at 2004 Shiraz Computer Exhibition (International Exhibition, Shiraz, IRAN), Dec 2004
- طراحی پایانه مسافربری جنوب شیراز، بهمن ۸۳
- Designing and developing technical designs of "*Shiraz Bus Terminal*", Winter 2005
- طراحی پژوهشکده انسانشناسی شیراز، بهمن ۸۴
- Designing *Shiraz Anthropological Research Center*, Winter 2006
- طراحی برج مسکونی دالکی، خرداد ۸۶
- Designing and developing Primary designs of *Dalaki Residential Tower*, June 2007

## فعالیت ها طی همکاری با معاونت مهندسی نیروی انتظامی استان فارس

- توسعه ستاد فرماندهی نیروی انتظامی استان فارس: فعالیت به عنوان ناظر مقیم، آذر ۸۶ - فروردین ۸۷
- Supervision on construction of *Fars Police Department Command Office*, Dec 2007-April 2008
- طراحی محوطه پاسگاه های دارنگون شیراز-دهرم فراشبند-مصیری نورآباد-حضرتی کازرون، زمستان ۸۶
- Designing Landscapes of *Darengoon-Dehram-Masiri-Hazrati Police Departments*, Dec 2008-March 2009

## سوابق خدمات مشاوره تحت عنوان شرکت مهندسين مشاور پارس آرته پرداز

- طراحی خانه شماره ۱ (خانه نوری)، اردیبهشت ۱۳۸۷
- Designing *House No.1 (Noori House)*, May 2008
- طراحی خانه شماره ۲ (خانه حاتمی)، خرداد ۱۳۸۷
- Designing *House No.2 (Hatami House)*, June 2008
- طراحی نمای آپارتمان مسکونی دلاور، خرداد ۱۳۸۷
- Designing the façade of *Delavar residential Bldg.*, June 2008
- طراحی نمای آپارتمان مسکونی فسحتی، خرداد ۱۳۸۷
- Designing the façade of *Foshati residential Bldg.*, June 2008
- طراحی خانه شماره ۳ (خانه آل یاسین)، اسفند ۱۳۸۷
- Designing *House No.3 (Aliasin House)*, March 2009
- طراحی ساختمان اداری مدیریت برق ارسنجان، فروردین ۱۳۸۸
- Designing *Arsenjaan Electrical Distribution Co. Bldg.*, April 2009
- طراحی ساختمان سالن دو منظوره اجتماعات-نمایشگاهی نمایشگاه بین المللی فارس، اسفند ۱۳۸۷ - خرداد ۱۳۸۸
- Designing *Fars International Exhibition Auditorium*, March 2009-June 2009





# ACCOMPLISHED PROJECTS

Architectural Portfolio

- طراحی ساختمان اداری مدیریت برق داریون، تیر ۱۳۸۸
- Designing *Darioon Electrical Distribution Co. Bldg.*, July 2009
- طراحی ساختمان اداری مدیریت برق کامفیروز، مرداد ۱۳۸۸
- Designing *Kamfirooz Electrical Distribution Co. Bldg.*, August 2009
- طراحی مجتمع مسکونی آل یاسین، مرداد ۱۳۸۸
- Designing *Aliasin Residential Bldg.*, August 2009
- طراحی ساختمان اداری مدیریت برق سیدان، شهریور ۱۳۸۸
- Designing *Seidan Electrical Distribution Co. Bldg.*, Sept 2009
- طراحی ساختمان اداری مدیریت برق درودزن، شهریور ۱۳۸۸
- Designing *Doroodzan Electrical Distribution Co. Bldg.*, Sept 2009
- طراحی ورودی سالن حافظ (سالن ۶۰۰۰ مترمربعی) نمایشگاه بین المللی فارس، آبان ۱۳۸۸
- Designing the *Entrance of the Hafez Hall (Fars International Exhibition)*, Nov 2009
- نظارت بر عملیات اجرایی ساخت ساختمان اداری مدیریت برق ارسنجان، دی ۱۳۸۸ – مرداد ۱۳۸۹
- Supervision on construction of *Arsenjaan Electrical Distribution Co. Bldg.*, Jan 2010-August 2010
- نظارت بر عملیات اجرایی ساخت ساختمان اداری مدیریت برق داریون، دی ۱۳۸۸ – مرداد ۱۳۸۹
- Supervision on construction of *Darioon Electrical Distribution Co. Bldg.*, Jan 2010-August 2010
- نظارت بر عملیات اجرایی ساخت ساختمان اداری مدیریت برق کامفیروز، دی ۱۳۸۸ – مرداد ۱۳۸۹
- Supervision on construction of *Kamfirooz Electrical Distribution Co. Bldg.*, Jan 2010-August 2010
- نظارت بر عملیات اجرایی ساخت ساختمان اداری مدیریت برق درودزن، دی ۱۳۸۸ – مرداد ۱۳۸۹
- Supervision on construction of *Doroodzan Electrical Distribution Co. Bldg.*, Jan 2010-August 2010
- نظارت بر عملیات اجرایی ساخت ساختمان اداری مدیریت برق کوار، دی ۱۳۸۸ – مرداد ۱۳۸۹
- Supervision on construction of *Kavar Electrical Distribution Co. Bldg.*, Jan 2010-August 2010
- نظارت بر عملیات اجرایی ساخت ساختمان اداری مدیریت برق صدرا، دی ۱۳۸۸ – اردیبهشت ۱۳۸۹
- Supervision on construction of *Sadra Electrical Distribution Co. Bldg.*, Jan 2010-May 2010
- نظارت بر عملیات اجرایی ساخت ساختمان اداری مدیریت برق امور سه شیراز، دی ۱۳۸۸ – مرداد ۱۳۸۹
- Supervision on construction of *Shiraz Electrical Distribution Co. Bldg. (Branch 3)*, Jan 2010-August 2010
- طراحی مجموعه فرهنگسرا – مهمانسرای مدیریت برق مرودشت، تیر ۱۳۸۹
- Designing *Marvdasht Electrical Distribution Co. Inn-Cultural Center Bldg.*, July 2010
- طراحی مجموعه ورزشی و ساماندهی بخش اداری مدیریت برق مرودشت، مرداد ۱۳۸۹
- Designing *Marvdasht Electrical Distribution Co. Athletic Complex*, August 2010
- طراحی طرح توسعه ساختمان مدیریت نمایشگاه بین المللی فارس، مهر ۱۳۸۹
- Designing *Fars International Exhibition Office Bldg.*, Oct 2010
- طراحی ساختمان نمایندگی شرکت ایران خودرو فراشبند، آذر ۱۳۸۹
- Designing *Farrashband IKCO Bldg.*, Dec 2010



# ACCOMPLISHED PROJECTS

Architectural Portfolio

- طراحی نمای ساختمان تجاری نوریه (دبنهامز)، دی ۱۳۸۹
- Designing the facade of *Noorieh Bldg. (DEBENHAMS)*, Jan 2011-Oct 2011
- طراحی ساختمان مسکونی دارابی، اردیبهشت ۱۳۹۰
- Designing *Darabi Residential Bldg.*, May 2011
- طراحی ساختمان نمایشگاه مرکزی شرکت **SAMSUNG**، شهریور ۱۳۹۰
- Designing *Shiraz Central SAMSUNG Bldg.*, Sept 2011
- طراحی ساختمان تجاری-مسکونی طالبی، مهر ۱۳۹۰
- Designing *Talebi Commercial-Residential Bldg.*, Oct 2011
- نظارت بر عملیات اجرایی احداث ساختمان تجاری نوریه، دی ۱۳۸۹-مهر ۱۳۹۰
- Supervision on construction of *Noorieh Bldg (DEBENHAMS)*, P.A.P. Consulting Engineers, Jan. 2011-Oct. 2011
- طراحی ساختمان مسکونی حسینی، اسفند ۱۳۹۰
- Designing *Hosseini Residential Bldg.*, March 2012
- طراحی داخلی دفتر مشاوران مسکن غرب ۲، اردیبهشت ۱۳۹۱
- Interior designing of *Gharb Real Estate II Office*, May 2012-August 2012
- طراحی آزمایشگاه تشخیص طبی دکتر صدر ارحامی، تیر ۱۳۹۱
- Designing & Managing construction of *Dr. Sadr Arhami pathobiology Lab Bldg.*, July 2012
- مدیریت عملیات اجرایی احداث دفتر مشاوران مسکن غرب ۲، اردیبهشت ۱۳۹۱-مرداد ۱۳۹۱
- Managing construction of *Gharb Real Estate II Office*, P.A.P. Consulting Engineers, May 2012-Aug. 2012
- طراحی ساختمان مدیریت تالار پذیرایی شریفی (شهر قائمیه)، دی ۱۳۹۱
- Designing *Sharifi's Ceremony Hall Office (Ghaemieh City)*, Jan 2013
- طراحی ساختمان مسکونی حسین پور، فروردین ۱۳۹۲
- Designing *Hossein Pour Residential Bldg.*, April 2013
- مدیریت عملیات اجرایی احداث آزمایشگاه تشخیص طبی دکتر صدر ارحامی، تیر ۱۳۹۱-اردیبهشت ۱۳۹۲
- Managing construction of *Dr. Sadr Arhami Phatobiology Lab Bldg*, P.A.P.C.E., July 2012-May 2013
- طراحی گره شهری مرکزی جزیره کیش، بهمن ۱۳۹۲
- Designing *Kish City Center*, Feb. 2014
- طراحی ساختمان مسکونی نوری، اسفند ۱۳۹۲
- Designing *Noori Residential Bldg.*, March 2014
- طراحی داخلی واحد آپارتمان مسکونی مسلمی، فروردین ۱۳۹۳
- Interior Designing *Moslemi Apartment unit*, April 2014
- طراحی و مدیریت عملیات اجرایی ساخت واحد تجاری ۴۱۰۴ مجتمع خلیج فارس، اردیبهشت ۱۳۹۳
- Designing *4104 Commercial Unit, Persian Gulf Mall*, May 2014
- طراحی غرفه شرکت گیوا (دژینه درب) در نمایشگاه بین المللی ساختمان شیراز، اردیبهشت ۱۳۹۳
- Designing the Pavilion of *Giva Co. (Dejineh Door)* at Shiraz Construction Exhibition, May 2014
- طراحی ساختمان انجمن دوستی ایران-ایتالیا، تیر ۱۳۹۳
- Designing *Iran-Italy Friendship Association Bldg.*, July 2014





# ACCOMPLISHED PROJECTS

Architectural Portfolio

- طراحی ساختمان مسکونی ظریف صناعی، تیر ۱۳۹۳
- Designing *Zarifsanaiey Residential Bldg.*, July 2014
- طراحی ساختمان مسکونی شایسته، آبان ۱۳۹۳
- Designing *Shayesteh Residential Bldg.*, November 2014
- طراحی ساختمان مسکونی آدasha، دی ۱۳۹۳
- Designing *Adasha Residential Bldg.*, January 2015
- طراحی مجتمع اقامتی-تفریحی مهاجر، دی ۱۳۹۳
- Designing *Mohajer Touristic Residential Complex*, January 2015
- طراحی مجتمع خوابگاه دانشجویی دانشگاه کیش، بهمن ۱۳۹۳
- Designing *Kish Island Dormitory Complex*, February 2015
- طراحی منزل مسکونی سلامتیان، اردیبهشت ۱۳۹۴
- Designing *Salamatian House*, April 2015
- انجام مطالعات پایه-امکان سنجی و تهیه طرح توجیهی-برنامه ریزی فیزیکی برج مسکونی فرزنانگان، اردیبهشت ۱۳۹۴
- Preparing the feasibility studies of *Farzanegan Residential Tower*, May 2015
- طراحی داخلی ساختمان مسکونی شایسته، آذر ۱۳۹۴
- Interior Designing *Shayesteh Residential Bldg.*, December 2015
- مدیریت عملیات اجرایی احداث واحد آپارتمان مسکونی مسلمی، فروردین ۱۳۹۳-دی ۱۳۹۴
- Managing construction of Moslemi Apartment Unit, P.A.P.C.E., Apr. 2014-Jan. 2016
- طراحی داخلی ساختمان مسکونی ظریف صناعی، بهمن ۱۳۹۴
- Interior Designing *Zarifsanaiey Residential Bldg.*, February 2016
- مدیریت عملیات اجرایی ساخت ساختمان مسکونی حسینی، اردیبهشت ۱۳۹۱ - بهمن ۱۳۹۴
- Managing construction of Hosseini Residential Bldg. ,May 2012-August 2014
- طراحی ساختمان مسکونی مرادی، بهمن ۱۳۹۴
- Designing *Moradi Residential Bldg.*, February 2016
- طراحی ساختمان مسکونی علاقه بند، اسفند ۱۳۹۴
- Designing *Alagheband Residential Bldg.*, March 2016
- طراحی ویلا مسکونی صحرائیان، تیر ۱۳۹۵
- Designing *Sahraeian Villa*, July 2016
- طراحی برج مسکونی فرزنانگان، آذر ۱۳۹۵
- Designing *Farzanegan Residential Tower*, December 2016
- مدیریت عملیات اجرایی ساخت منزل مسکونی سلامتیان، مرداد ۱۳۹۴-اسفند ۱۳۹۷
- Managing construction of Salamatian House, P.A.P. Consulting Engineers, Aug. 2015-Mar. 2019
- طراحی داخلی واحد آپارتمان مسکونی نعمت الهی، خرداد ۱۳۹۸
- Interior designing Nematollahi Apartment Unit, P.A.P. Consulting Engineers, June 2019



# ACCOMPLISHED PROJECTS

Architectural Portfolio

- طراحی داخلی واحد آپارتمان مسکونی مانی، شهریور ۱۳۹۸
- Interior designing Maani Apartment Unit, P.A.P. Consulting Engineers, Sept. 2019
- طراحی داخلی واحد آپارتمان مسکونی هوشمند، آبان ۱۳۹۸
- Interior designing Hooshmand Apartment Unit, P.A.P. Consulting Engineers, Oct. 2019
- مدیریت عملیات اجرایی احداث واحد آپارتمان مسکونی نعمت الهی، خرداد ۱۳۹۸-آذر ۱۳۹۸
- Managing construction of Nematollahi Apartment Unit, P.A.P. Consulting Engineers, June 2019-Nov. 2019
- طراحی داخلی واحد آپارتمان مسکونی سلامتیان، دی ۱۳۹۸
- Interior designing Salamatian Apartment Unit, P.A.P. Consulting Engineers, Jan. 2020
- مدیریت عملیات اجرایی احداث واحد آپارتمان مسکونی هوشمند، آبان ۱۳۹۸-مرداد ۱۳۹۹
- Managing construction of Hooshmand Apartment Unit, P.A.P. Consulting Engineers, Oct. 2019-Aug. 2020
- مدیریت عملیات اجرایی احداث واحد آپارتمان مسکونی سلامتیان، دی ۱۳۹۸-شهریور ۱۳۹۹
- Managing construction of Salamatian Apartment Unit, P.A.P. Consulting Engineers, Jan. 2020-Sept. 2020
- مدیریت عملیات اجرایی احداث ساختمان مسکونی ظریف صنایعی، خرداد ۱۳۹۲-شهریور ۱۳۹۹
- Managing construction of Zarifsanaiey Residential Bldg, P.A.P. Consulting Engineers, June 2013-Sept. 2020





P.A.P. Consulting Engineers

# THE PAVILION OF MAXXONET CO.

Architectural Portfolio - August 2014 -



**The Pavilion of Maxxonet Co.,** Fars International Exhibition, Golestan Town, Shiraz, Fars, IRAN.

December 2004, Designing and managing construction of the Pavilion of *Maxxonet Co.* at *2004 Shiraz Computer Exhibition* which was located at the Fars International Exhibition, Shiraz, IRAN

This pavilion was designed for the purpose of showing the newest models of notebooks that the products of Maxxonet Co. contained.

**Client:** Tamiz





# SHIRAZ SOUTH BUS TERMINAL

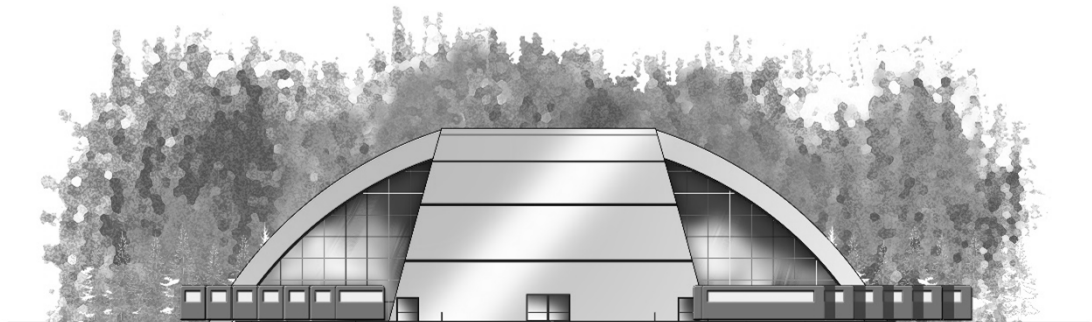
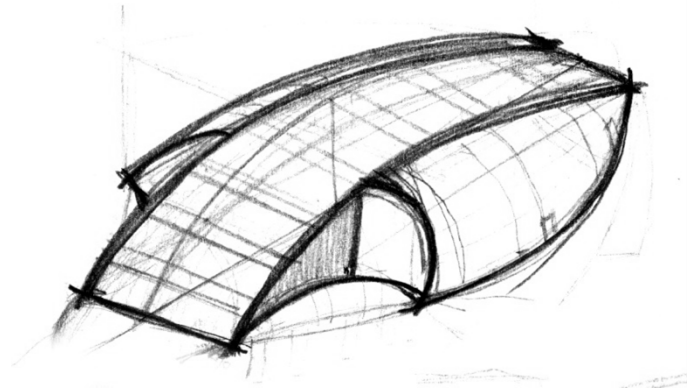
Architectural Portfolio · August 2014 ·

The project was to design a bus terminal to support transportations between Shiraz city and southern regions. This project has been done in three phases, during the course entitled *"Technical Design"*, winter 2005

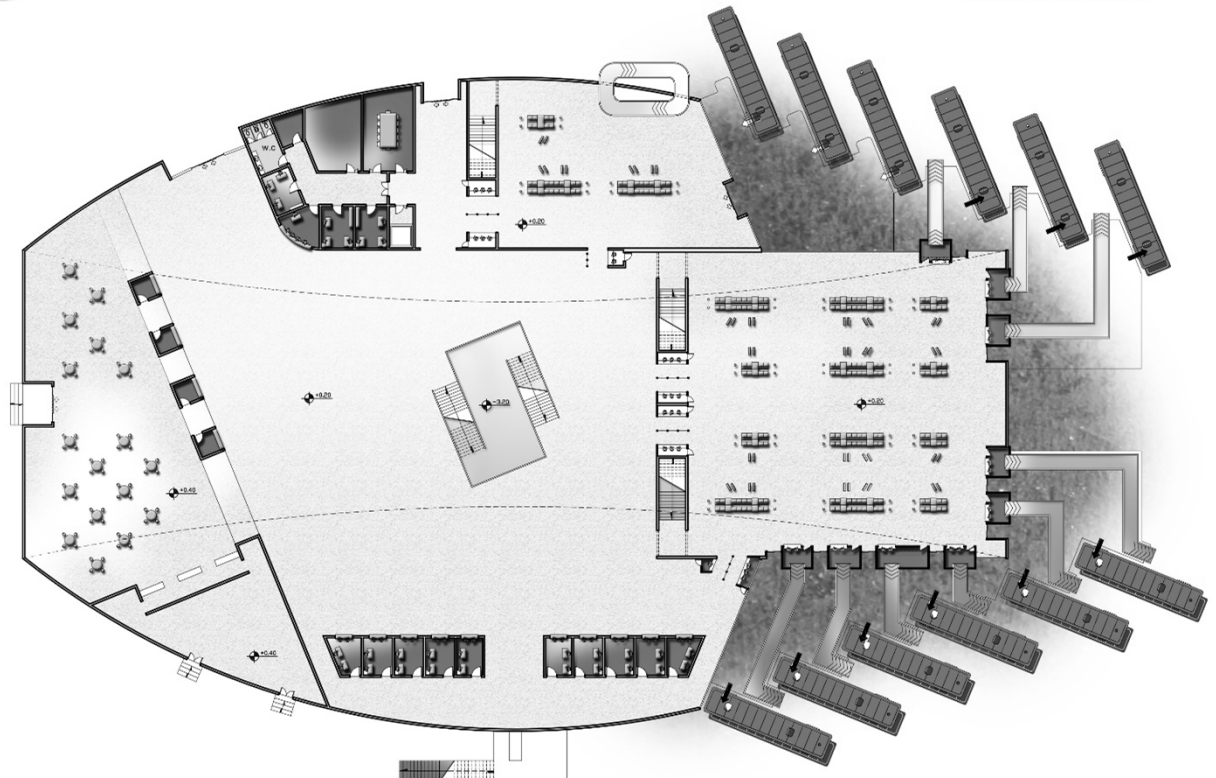
**First phase:** Designing the architectural spaces and preparing the perfect architectural designs.

**Second phase:** Choosing proper structure with the design and transfer of powers, considering the mutual influences of the structure system and the architectural spaces.

**Third phase:** Designing and drawing the details of constructional elements, drawing the sections of septum and the covers or the other main elements.



ELEVATION



GROUND FLOOR PLAN





**The Anthropological Research Center, Shiraz, Fars, IRAN.**

The project has been done as a final thesis under supervision of Dr. Mohammad Aliabadi, winter 2006. The project was to design an allocated research center for the Anthropological studies in order to achieve the quality advancement of Anthropology and expand the effects of this knowledge.

The process of design included both the detailed research phase and the practical design phase. The research phase contained some main issues such as "Anthropology" (involving "The history of Anthropology", "The contexts of Anthropology", "The branches of Anthropology", "Anthropology and Ethnology", "The description of Anthropology", "The methods of Anthropology" and "Ethnology in IRAN"), "The purposes of The Anthropological Research Center", "Similar Samples" and "the deliberation of the quality of locations and potentials to select the project site". The design phase started with recognizing the properties of the departments and continued with programming the spaces to build up the preparation for the design.

During the designing, spaces were considered based on the project purposes and their functions. Some of the spaces and departments which were included were: "The Central Hall", "The Specialized Library", "The Research Center", "The Publishing Center & Official Department", "The Auditorium", "The Cinema", "The Ethnological Specialized Museum" and "The Exhibition".



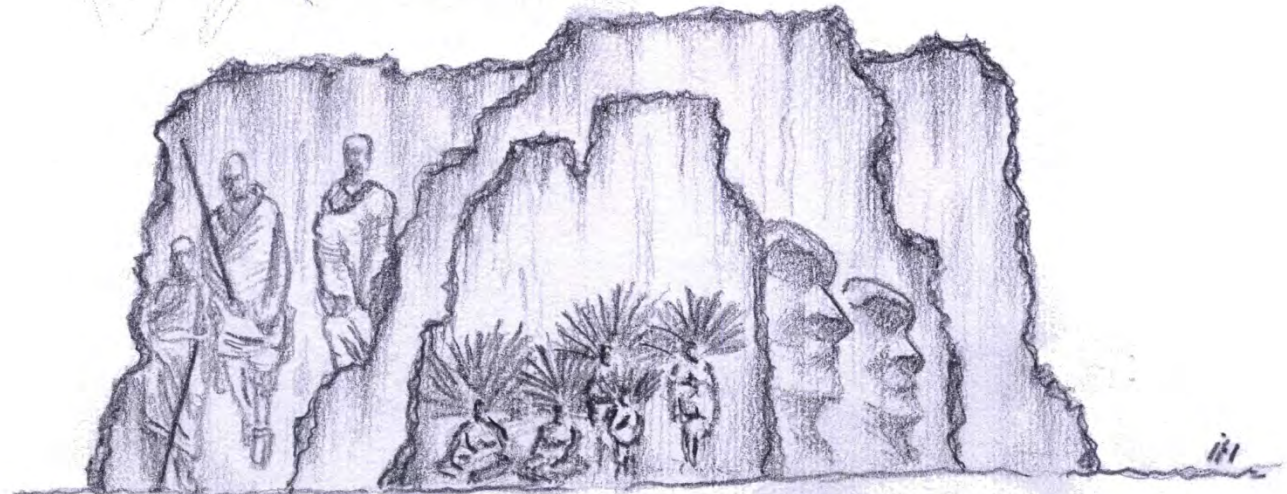
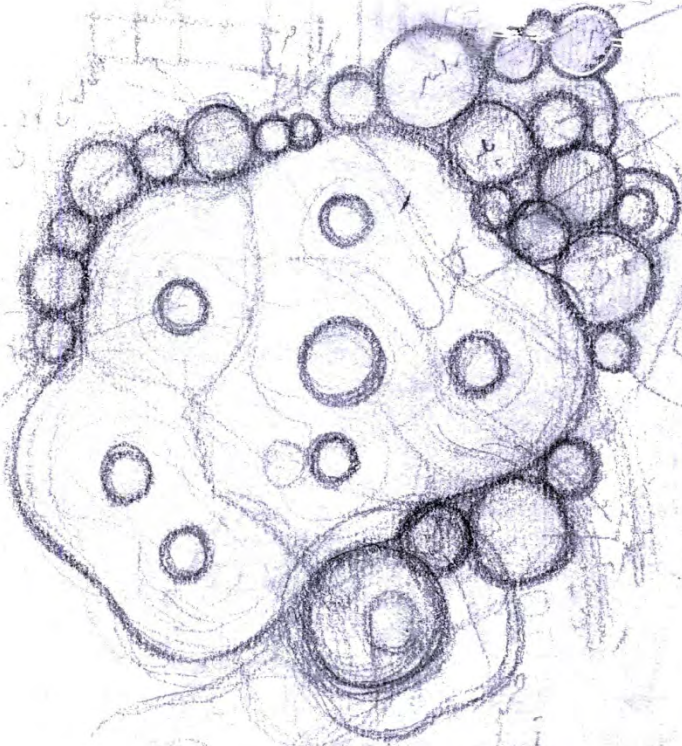
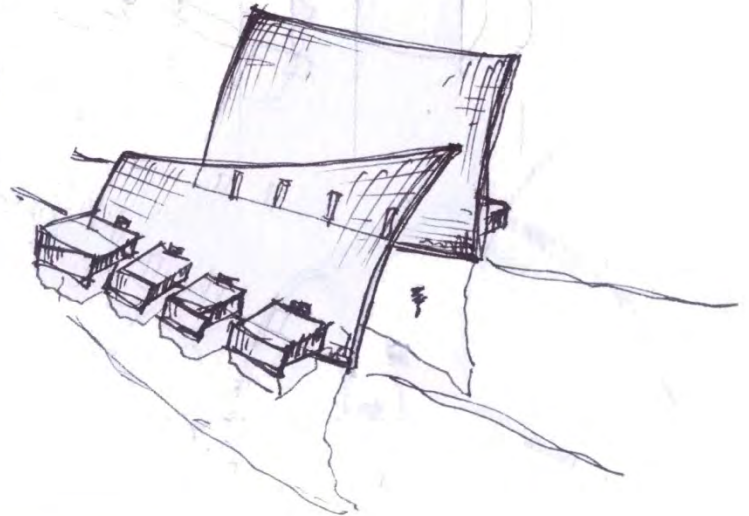
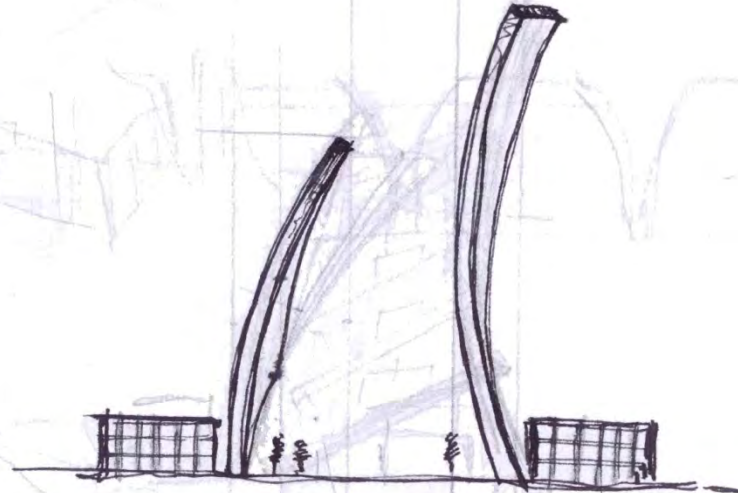
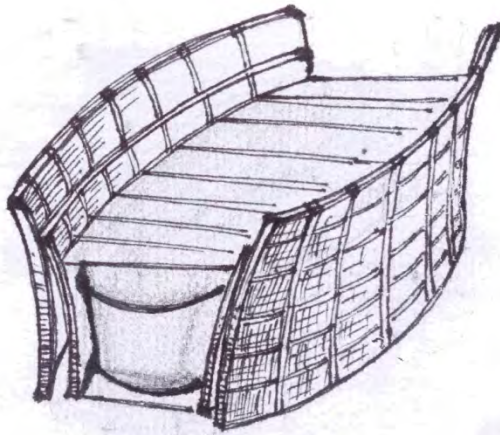




P.A.P. Consulting Engineers

# THE ANTHROPOLOGICAL RESEARCH CENTER

Architectural Portfolio - August 2014

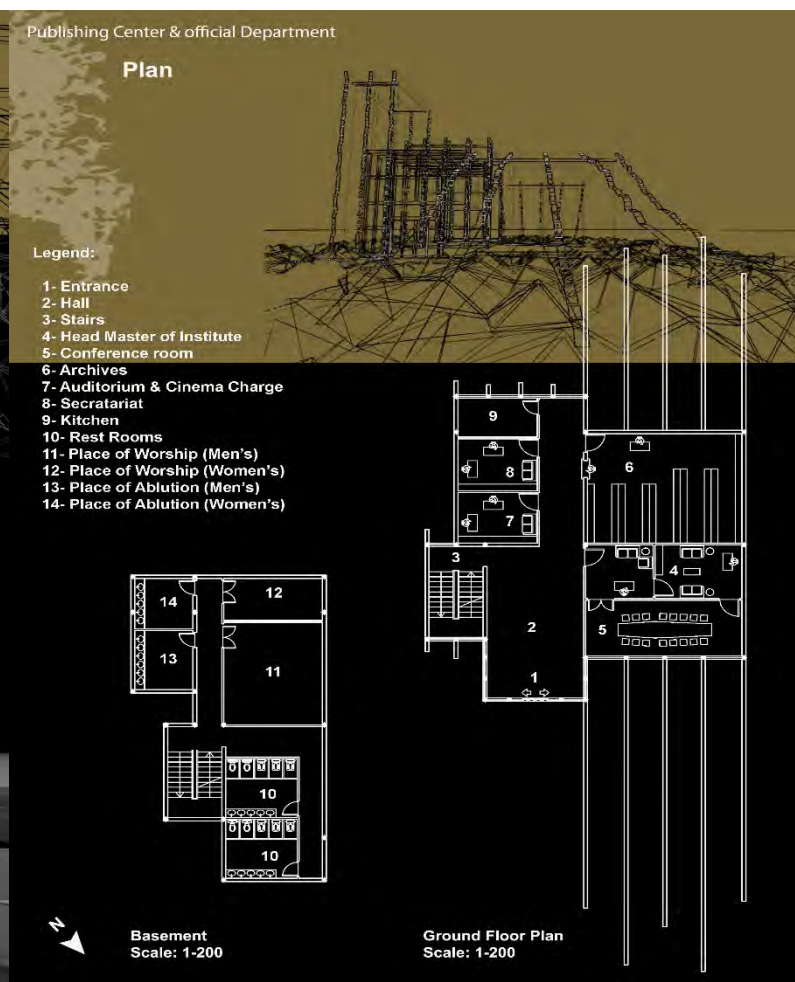
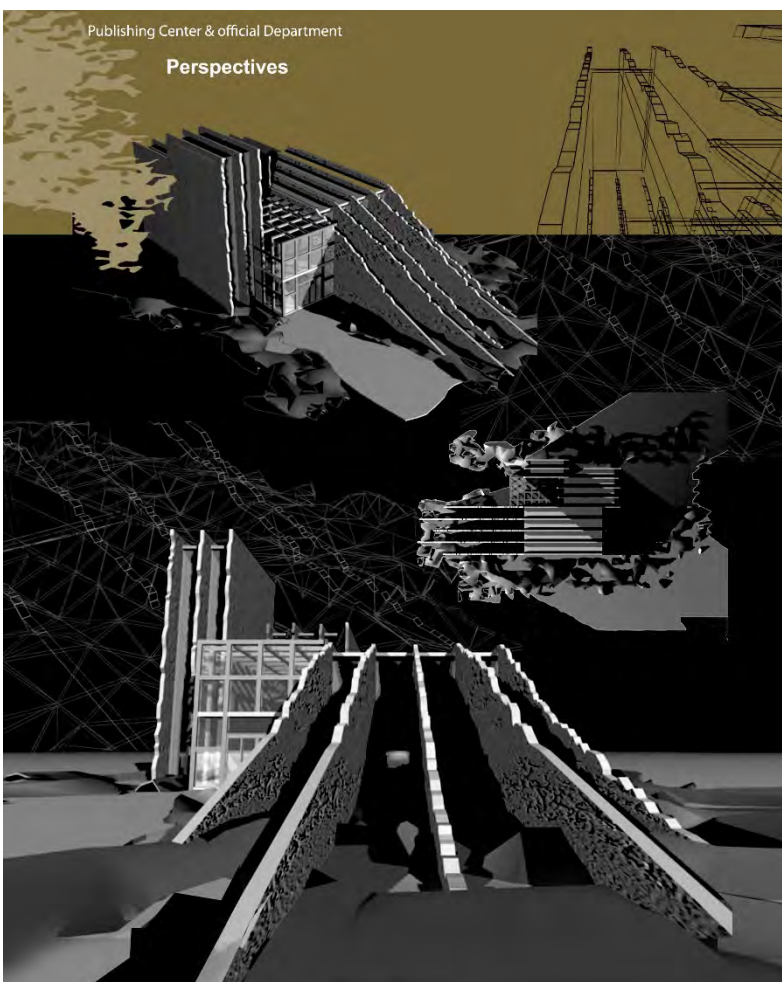
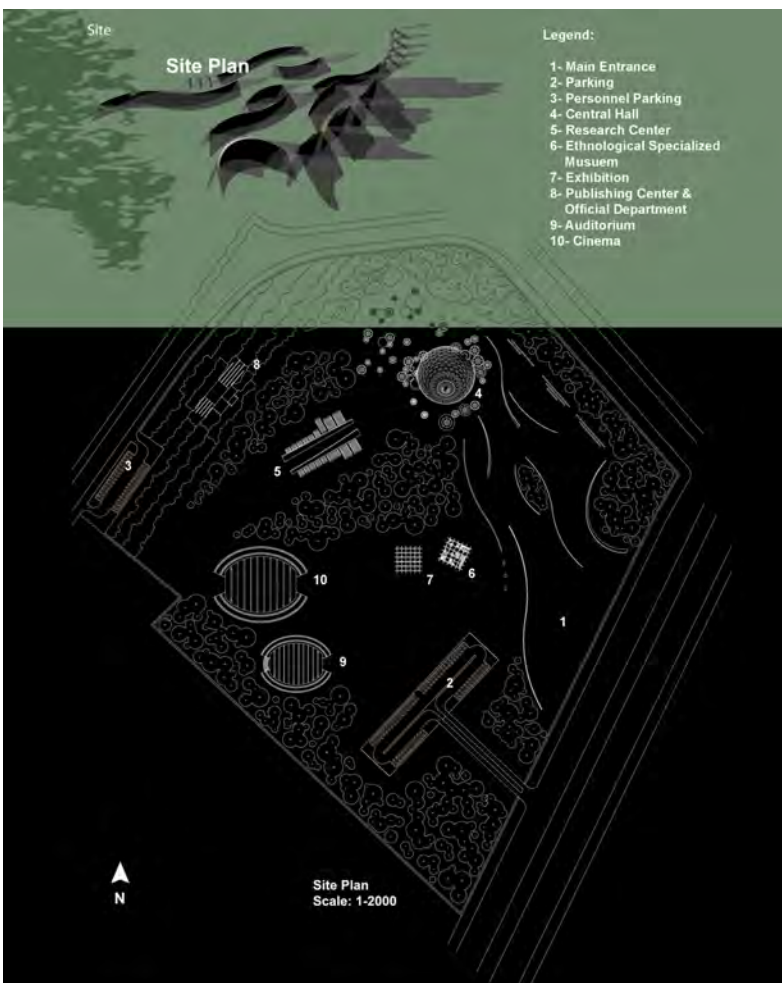






# THE ANTHROPOLOGICAL RESEARCH CENTER

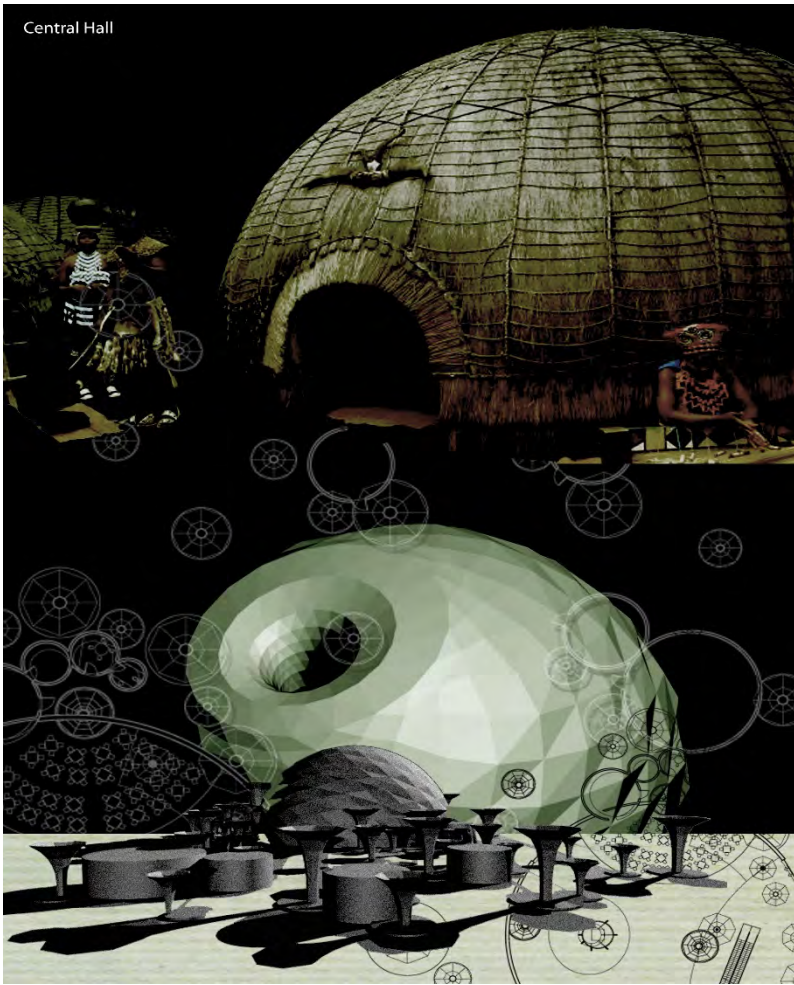
Architectural Portfolio - August 2014







Central Hall



Central Hall

**Concept:  
Complex Culture**



Central Hall

**Perspectives & Elevations**



Elevation  
Scale: 1-500

Central Hall

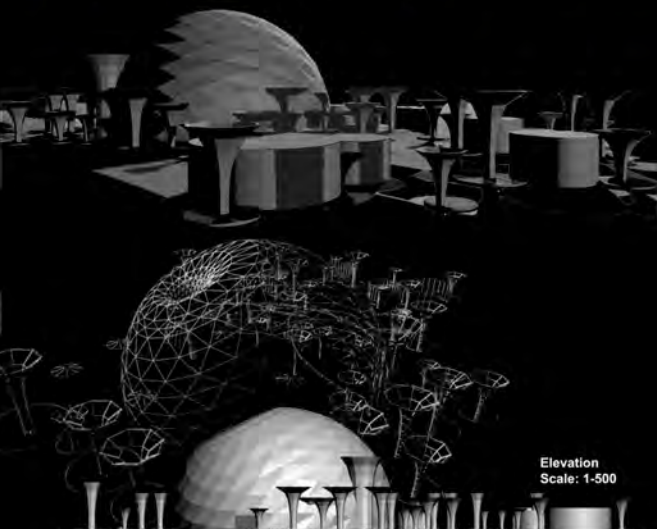
**Plans**

**Legend:**

- 1- Main Entrance
- 2- Other Gates
- 3- Complex Culture
- 4- Coffee Shop
- 5- Coffee Shop Kitchen
- 6- Store
- 7- Personnel Room
- 8- Rest room (Personnel)
- 9- Stairs & Lift - Library
- 10- Stairs - Computer Laboratory
- 11- Professors Room
- 12- Class Room (20 Students)
- 13- Class Room (50 Students)
- 14- Computer Laboratory
- 15- Laboratory Archives
- 16- Laboratory Charge
- 17- Main Server Room
- 18- Store
- 19- Control & Registration



First Floor Plan  
Scale: 1-500



Elevation  
Scale: 1-500



Ground Floor Plan  
Scale: 1-500



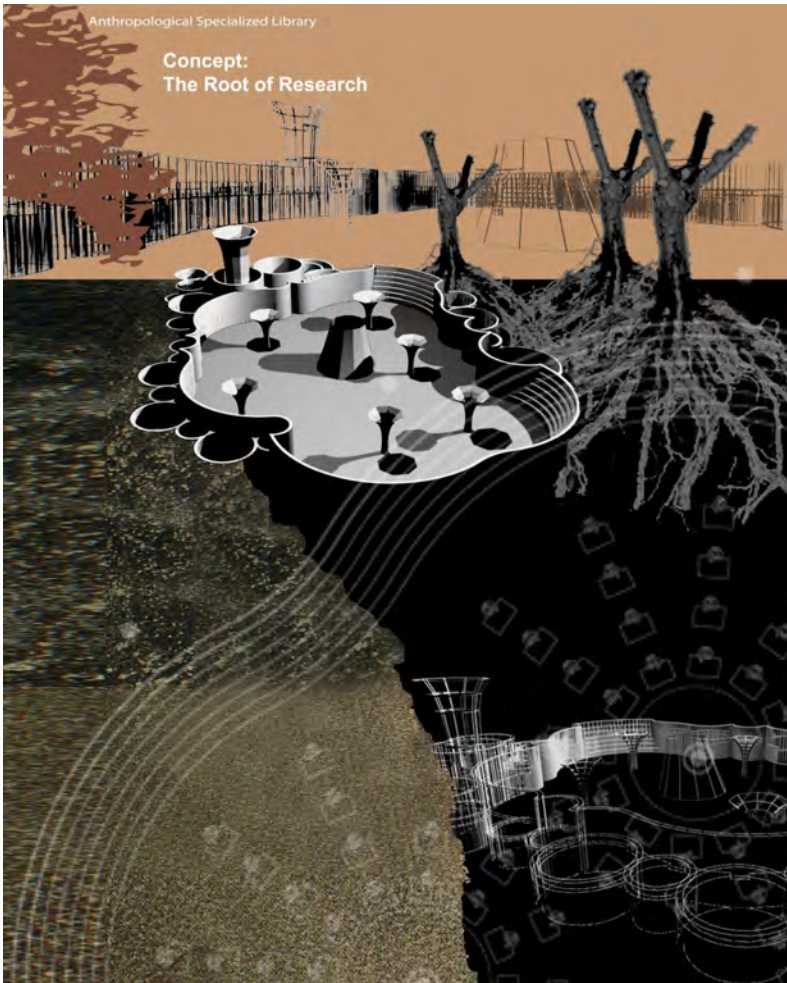


# THE ANTHROPOLOGICAL RESEARCH CENTER

Architectural Portfolio - August 2014

Anthropological Specialized Library

Concept:  
The Root of Research

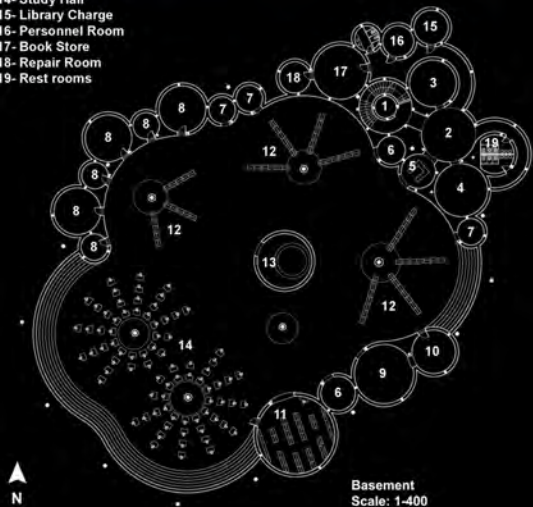


Anthropological Specialized Library

Plan

Legend:

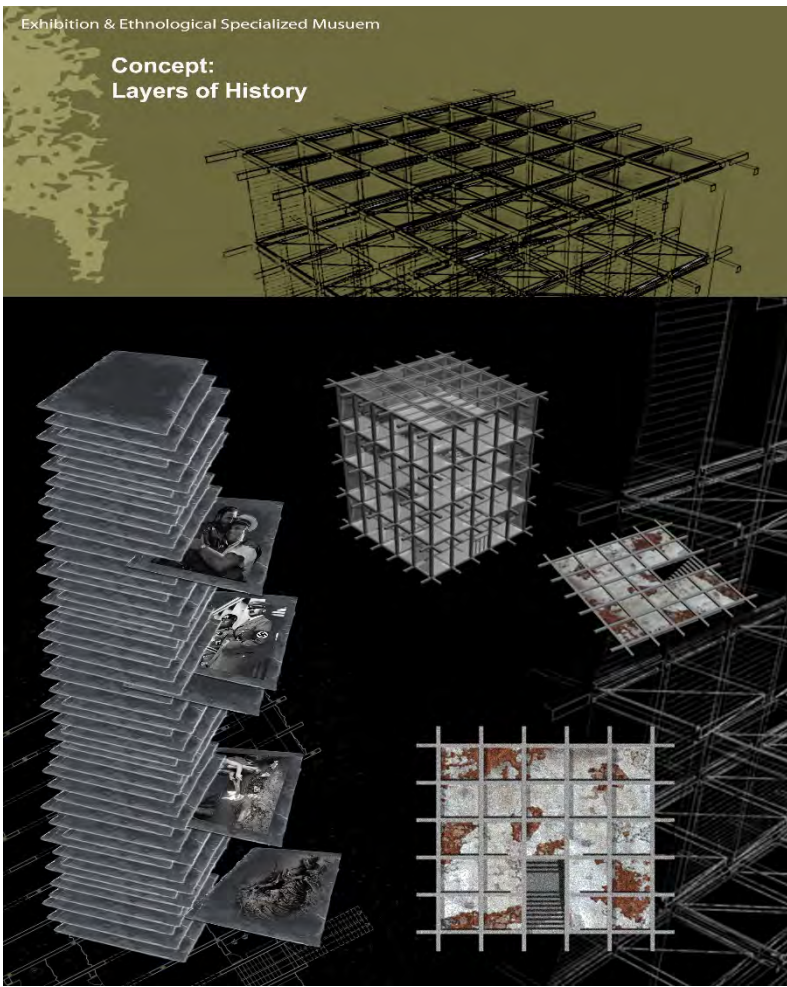
- 1- Stairs & Lift
- 2- Entrance
- 3- Vestibule
- 4- Book Exhibition
- 5- Control & Registration
- 6- Search Room
- 7- Copy Room
- 8- Study & Research
- 9- Microfilm Room
- 10- Microfilm case
- 11- Reference Books
- 12- Bookcase
- 13- Magazines
- 14- Study Hall
- 15- Library Charge
- 16- Personnel Room
- 17- Book Store
- 18- Repair Room
- 19- Rest rooms



Basement  
Scale: 1-400

Exhibition & Ethnological Specialized Musuem

Concept:  
Layers of History

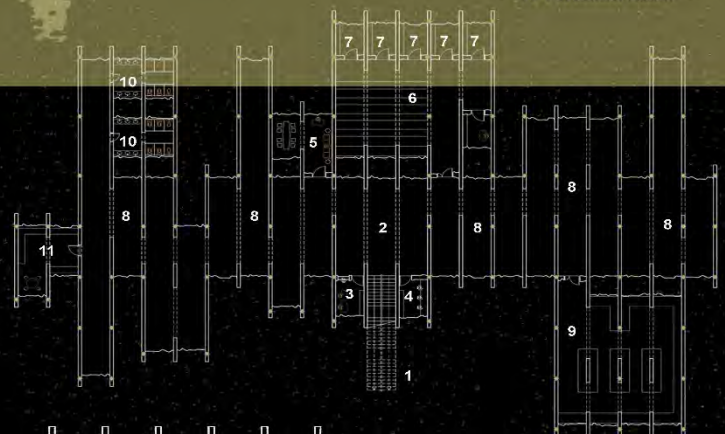


Ethnological Specialized Musuem

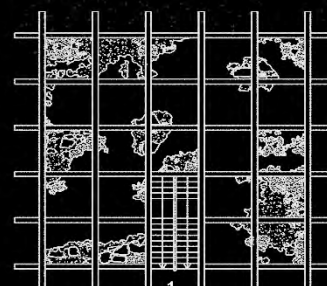
Plan

Legend:

- 1- Stairs
- 2- Entrance Hall
- 3- Information & Registration
- 4- Security & Control
- 5- Musuem Charge
- 6- Research Hall
- 7- Research Room
- 8- Gallery
- 9- Store
- 10- Rest Rooms
- 11- Personnel Room



Basement  
Scale: 1-200



Ground Floor Plan  
Scale: 1-200







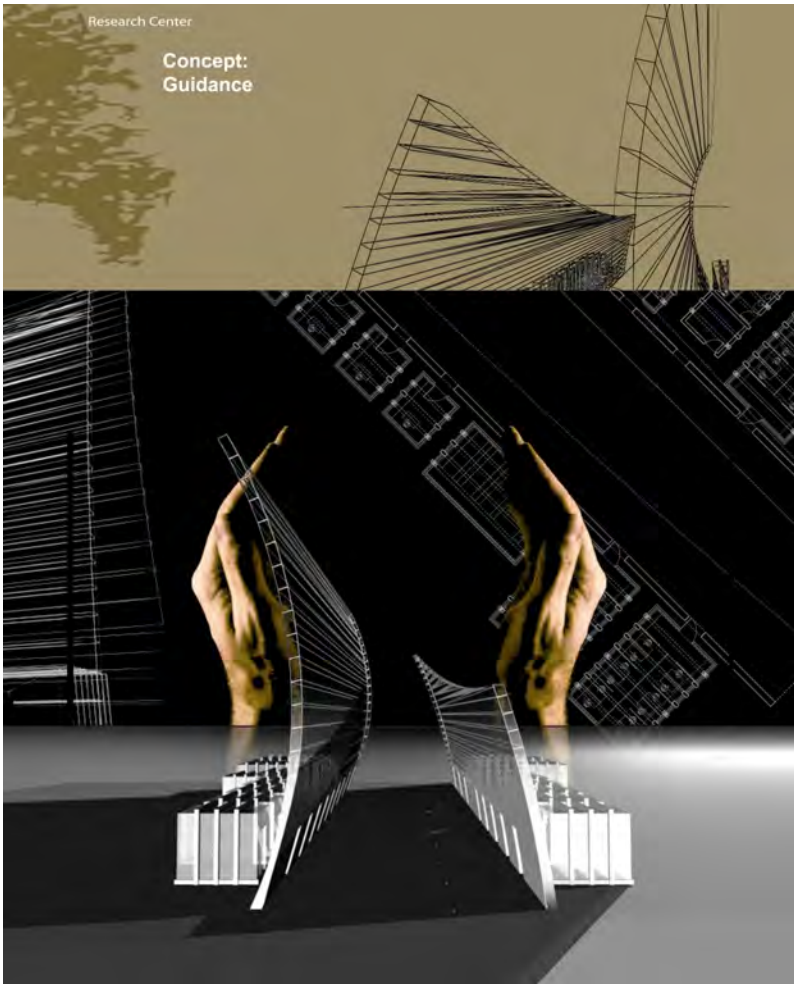
P.A.P. Consulting Engineers

# THE ANTHROPOLOGICAL RESEARCH CENTER

Architectural Portfolio - August 2014 -

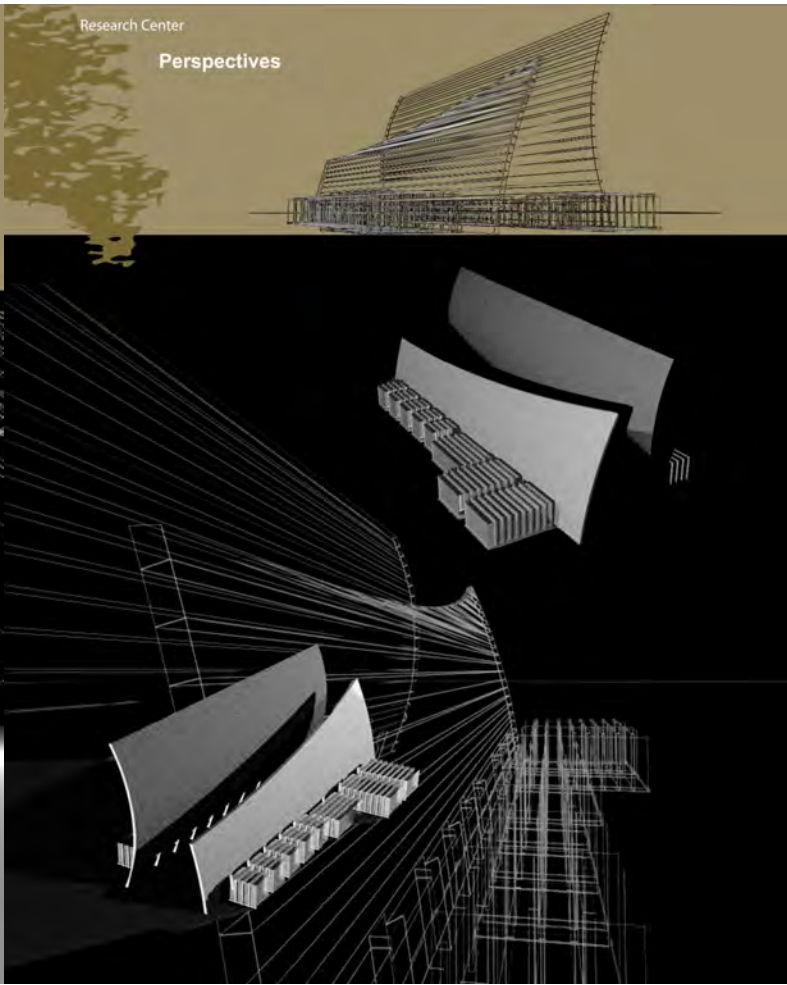
Research Center

Concept:  
Guidance



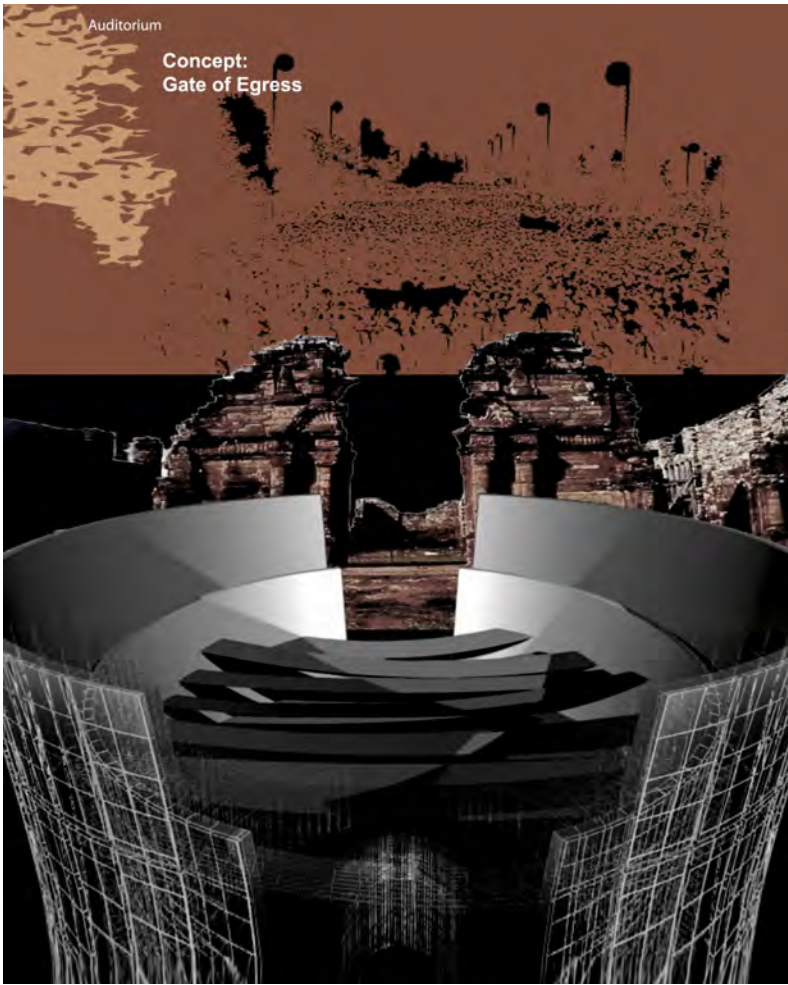
Research Center

Perspectives



Auditorium

Concept:  
Gate of Egress



Auditorium

Plan

Legend:

- 1- Personnel Entrance
- 2- Entrance
- 3- Foyer
- 4- Rest Rooms
- 5- Stairs to Upper Floor
- 6- Projection
- 7- Auditorium Entrance
- 8- Auditorium Exit
- 9- Auditorium (300 Seats)
- 10- Auditorium (100 Seats)
- 11- Stage
- 12- Side Stage
- 13- Back Stage

First Floor Plan  
Scale: 1-250

A-A

z

Ground Floor Plan  
Scale: 1-250





## CONSTRUCTION OF FARS POLICE DEPT. COMMAND OFFICE CONSTRUCTION OF ANDISHEH PARK

Architectural Portfolio - August 2014 -

### **Fars Police Department Command Office Bldg.,** Bagh-e Takht St., Shiraz, IRAN

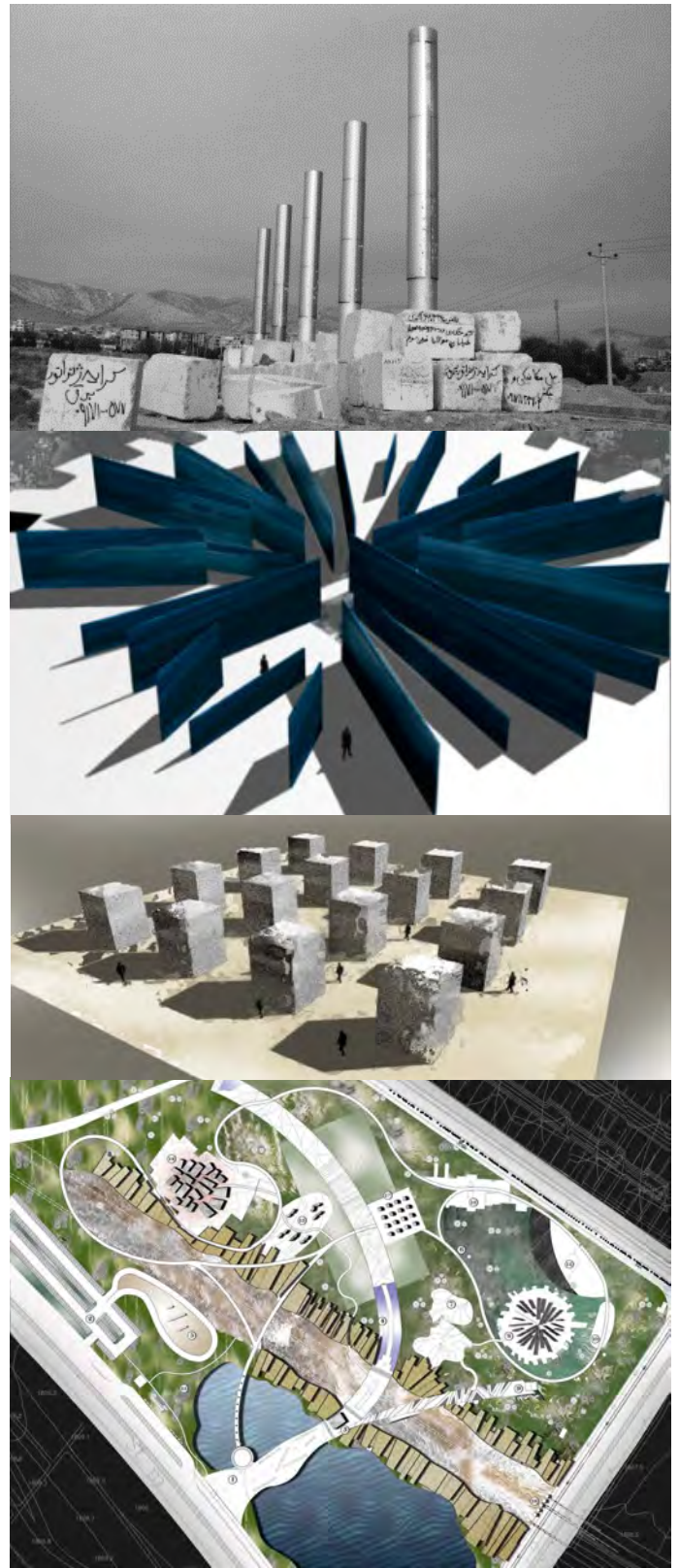
During Nov. 2007 – march 2008, and as a cooperation with *Fars Police Dept.*, participated in the construction of its command office building as the superintendent. Indeed, this project defined as developing project of current Fars Police Department Command building by adding an extra level to whole building.



### **Andisheh Park,** Sadra, Shiraz, IRAN

During Apr. 2005 – Dec. 2005, as the cooperation with *Mehrdad Iravanian & Associates Architectural Office*, participated in the landscape construction of Andisheh Park, an outstanding mega scale urban project in the main entrance of Sadra town, as the superintendent of the architectural construction group.

**Area:** 250,000m<sup>2</sup>





## CONSTRUCTION OF KOSAR HOUSING COMPLEX

Architectural Portfolio · August 2014 ·



**Kosar Housing Complex**, 58-units Housing Complex, Ghomabad St., Ghasrdasht St., Shiraz, IRAN.

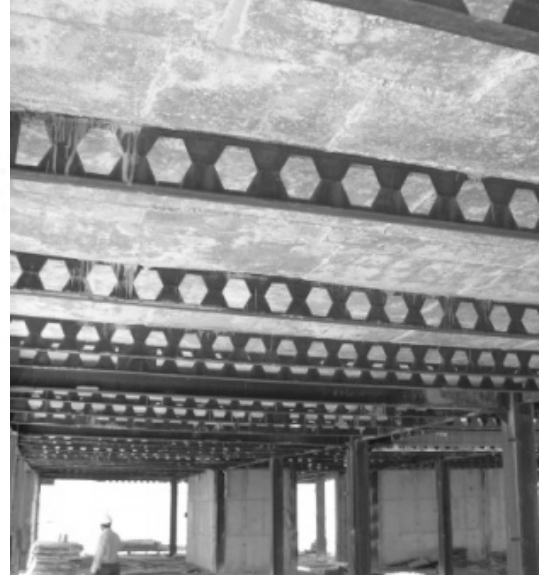
During Dec. 2005–June 2006, and as the cooperation with *Mehrdad Iravanian & Associates Architectural Office*, participated in the construction of Kosar Housing Complex as the superintendent of the architectural construction group. The project was a housing complex located in a luxury zone of Shiraz city which owned by Cooperative Corporation of Fars State Governmental Managers. **Area:** 14,500m<sup>2</sup>





# CONSTRUCTION OF TOLOO TOWER

Architectural Portfolio · August 2014 ·



**Toloo Tower**, 300-units Housing Complex of the employees of city hall, Jabal ol Derak, Shiraz, IRAN.

During Dec. 2006–July 2007, this project contained 6 residential towers which owned by the Shiraz City Hall Employees Cooperative Corporation, during the cooperation with *Mehrdad Iravanian & Associates Architectural Office*, participated in the construction of this project, Toloo Tower, as the superintendent of the architectural construction group.

**Area:** 56,000m<sup>2</sup>

# HOUSE NO. 1 & 2

Architectural Portfolio - August 2014

**House no.1** was an exceptional project which was designed as a villa for responding the demands of the owner in May 2008.

The project was designed in a natural context, placed at the suburb of Shiraz. In the course of design, I tried to preserve the independence of designing from norms and common rules to show a strong contrast. Nevertheless, I tried not to damage the roles of the spaces in an intact natural context.

**Client:** Kazem Noori

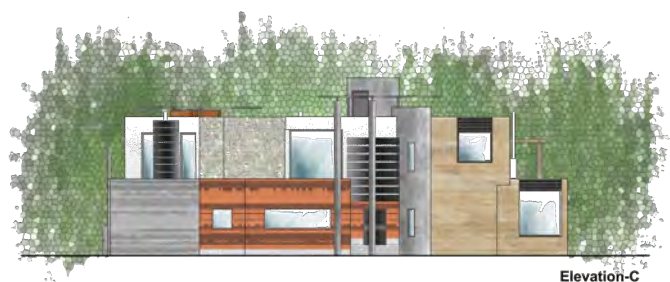
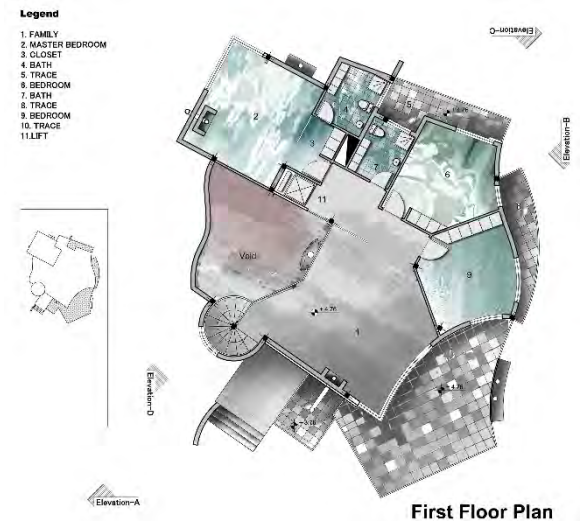
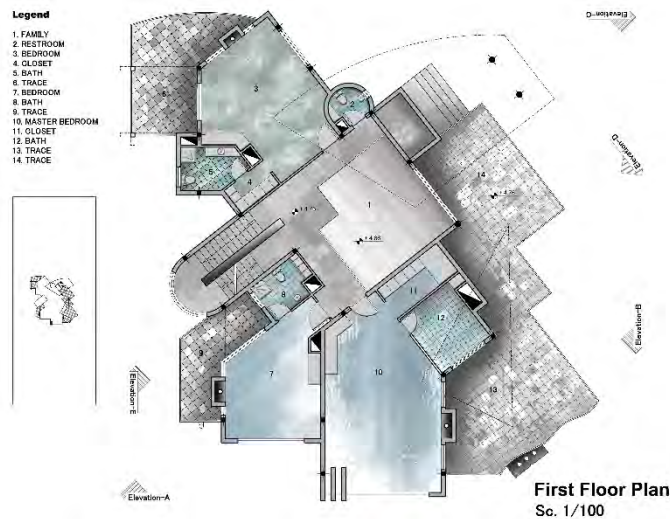
**Area:** 550 m<sup>2</sup>

**House no.2** was another exceptional project which was designed as a villa at the suburb of Shiraz, June 2008.

Despite an intact natural context, the site had a regular frame. Therefore, during the designing, I tried to avoid observing the regular septum to achieve a perfect free floating plan.

**Client:** Hatami

**Area:** 415 m<sup>2</sup>







## Foshati Residential Bldg., Chamran Blvd., Shiraz, IRAN.

June 2008, this project was redesigning the façade of a residential building contained 3 apartment units.

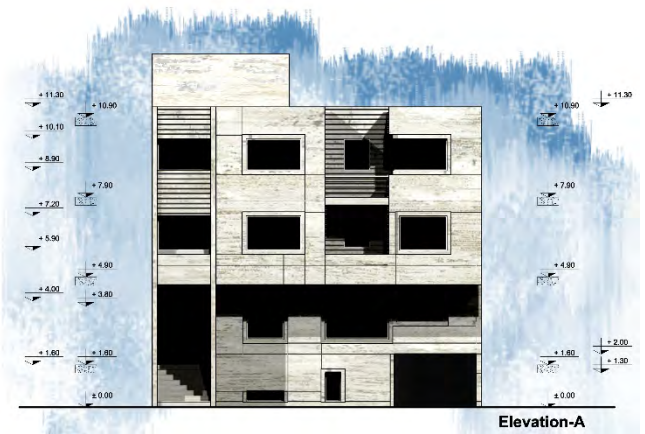
**Client:** Foshati-Varamini



## Delavar Residential Bldg., Motahari Blvd., Shiraz, IRAN.

June 2008, the project was defined as a redesigning the façade of a residential building contained 5 apartment units.

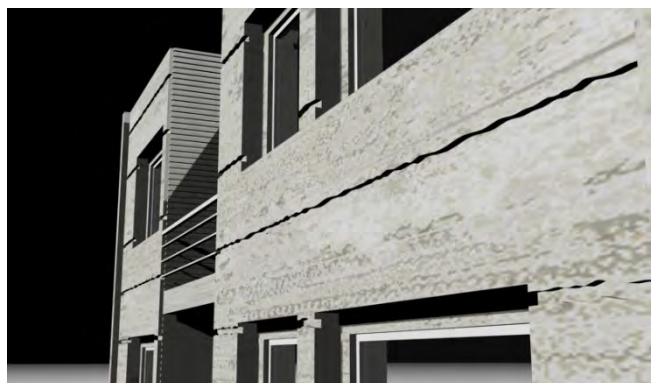
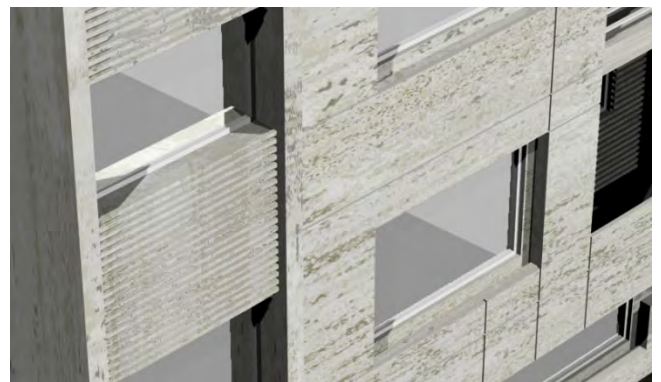
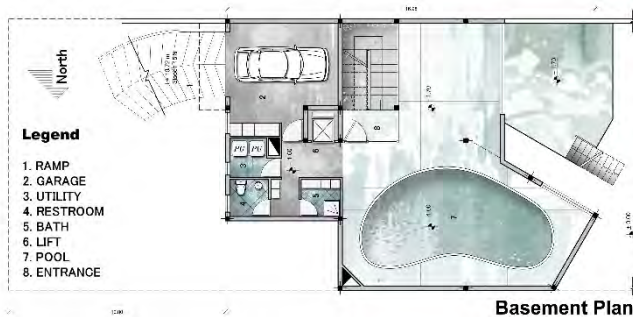
**Client:** Delavar-Varamini



## House No.3, Sanaye Blvd., Shiraz, IRAN

March 2009, this design was a house contained 3 levels with a pool and other facilities.

**Client:** Aliasin





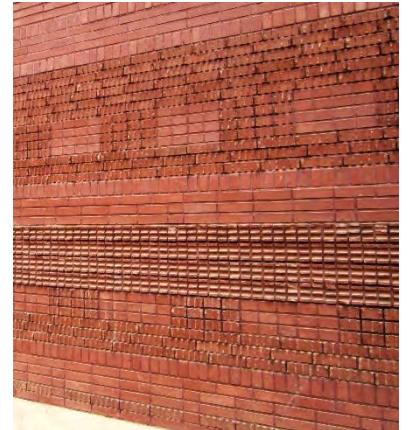
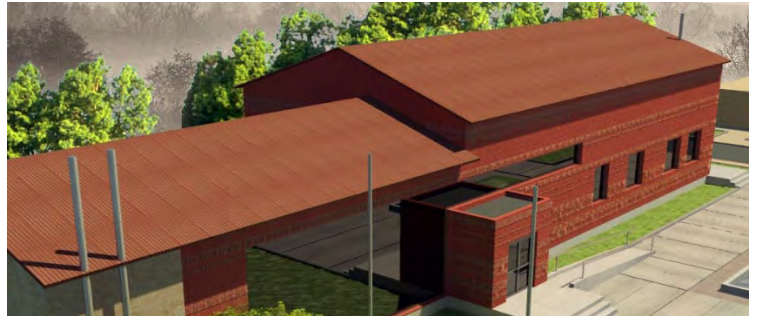
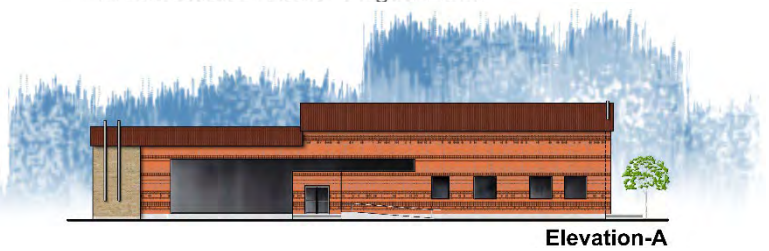
## Arsenjaan Electrical Distribution Co. Official Bldg., Arsenjaan, Fars, IRAN

April 2009, the cooperation with *P.A.P Consulting Engineers* continued by desining the official building of Arsenjaan Electrical Contribution Co. and its open spaces to reconstruct and change function of an old abandoned power plant shed which located at Arsenjaan City.

**Client:** Shiraz Electrical Contribution Co.

**Indoor Area:** 558 m<sup>2</sup>

**Open Space Area:** 11267 m<sup>2</sup>



Site Plan

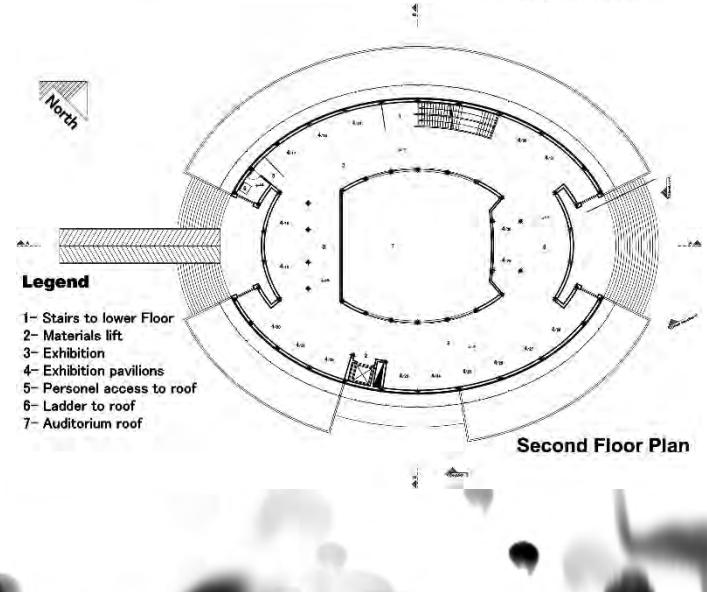
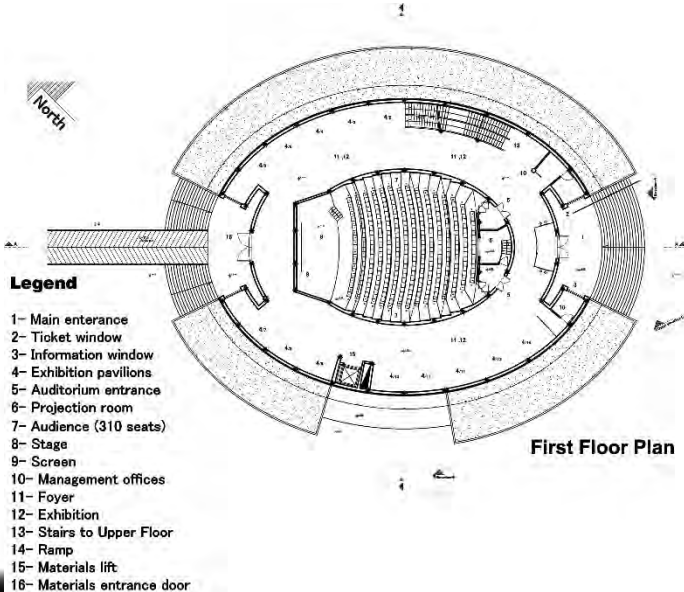
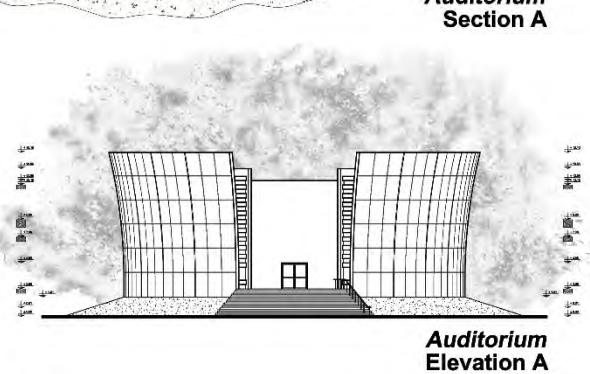
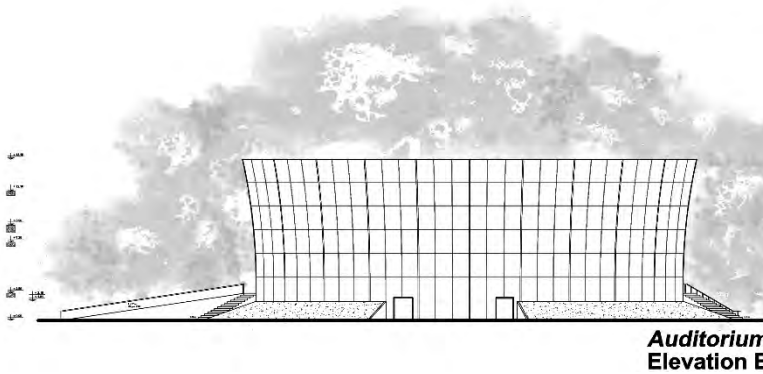
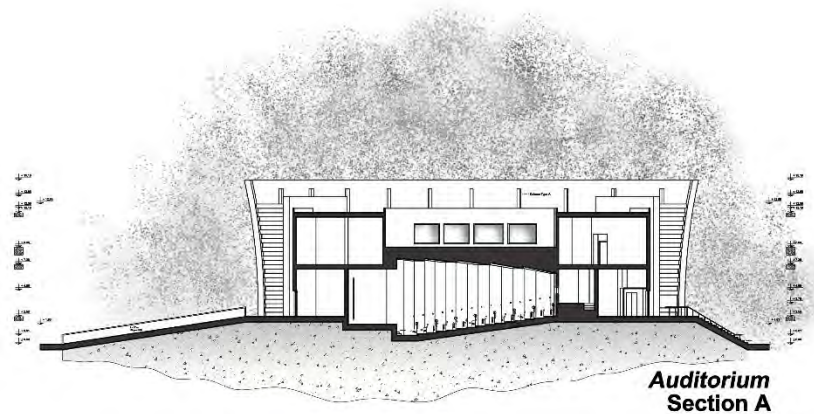


**Auditorium,** Fars International Exhibition Site, Golestan Town, Shiraz, IRAN.

Feb. 2009 - May 2009, as the cooperation with *P.A.P. Consulting Engineers*, a dual function building (Auditorium - Pavilion Hall) designed at Fars International Exhibition permanent site.

**Client:** Fars International Exhibition Co.

**Area:** 1700 m<sup>2</sup>





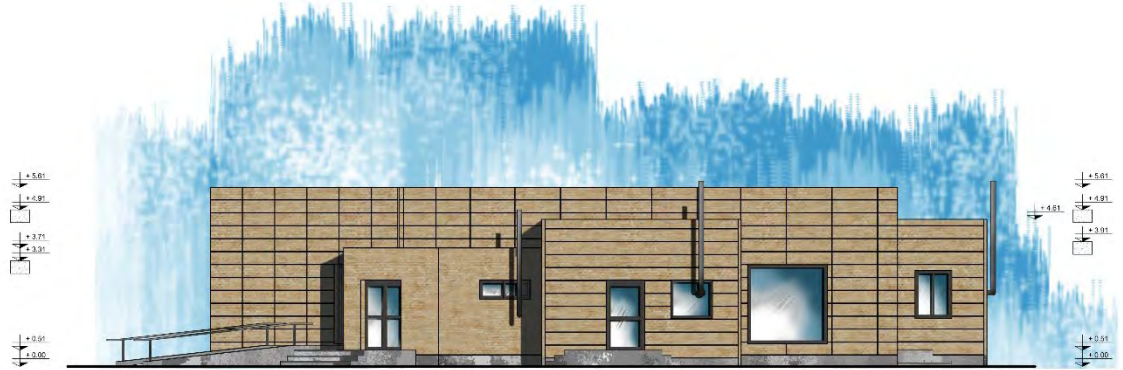
## Darioon Electrical Distribution Co. Bldg., Darioon, Fars, IRAN

July 2009, as the cooperation with *P.A.P Consulting Engineers*, Darioon Electrical Contribution Co. office building was designed, it was considered to use local materials combined a novel pattern to avoid contradiction with context.

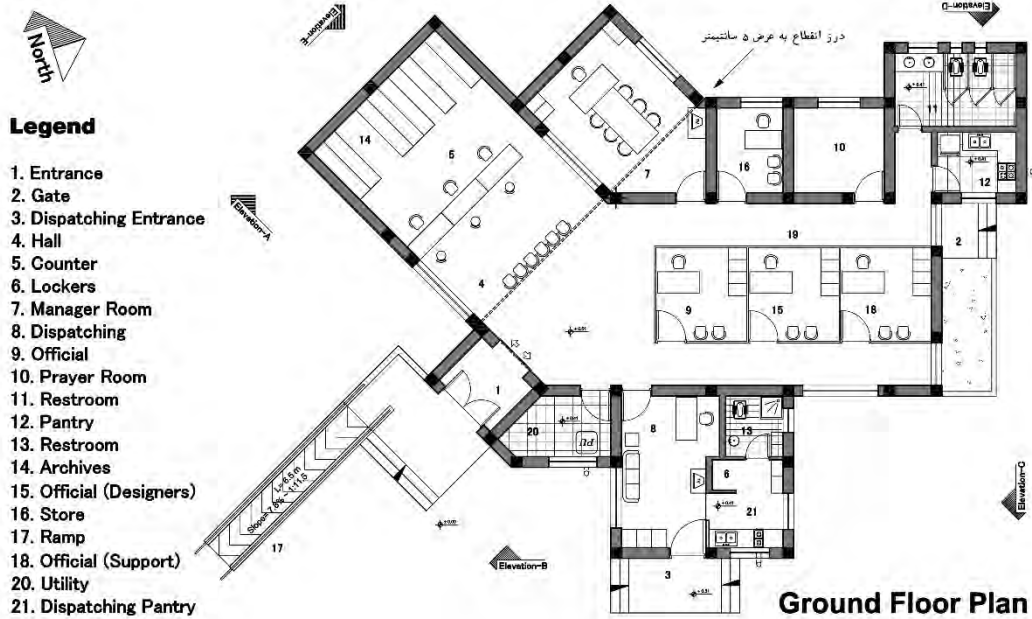
**Client:** Shiraz Electrical Contribution Co.

**Indoor Area:** 402 m<sup>2</sup>

**Open Space Area:** 3500 m<sup>2</sup>



Elevation-B



Ground Floor Plan



Site Plan

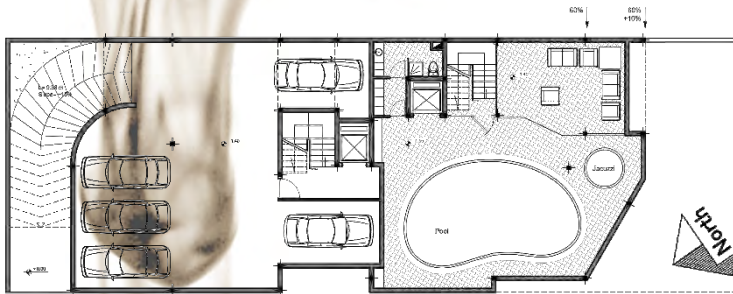


**Aliasin Residential Bldg.,** Sanaye Blvd., Shiraz, IRAN.

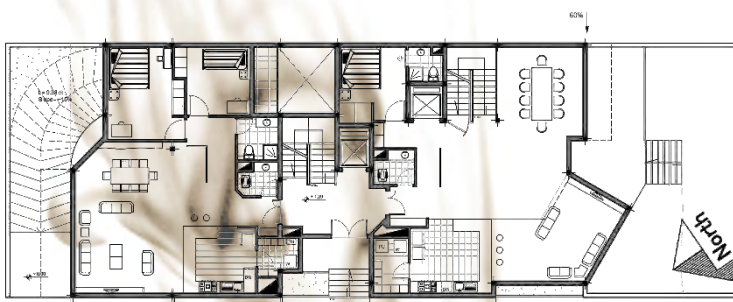
August 2009, as continuation of the cooperation with *P.A.P. Consulting Engineers*, This building was designed as a residential building contained 5 apartment units.

**Client:** Aliasin

**Area:** 1494 m<sup>2</sup>



Basement Plan



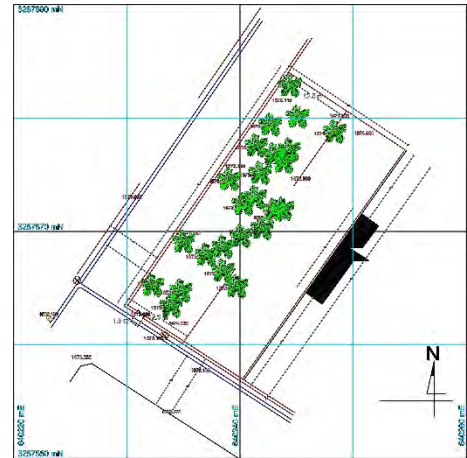
Ground Floor Plan



First Floor Plan

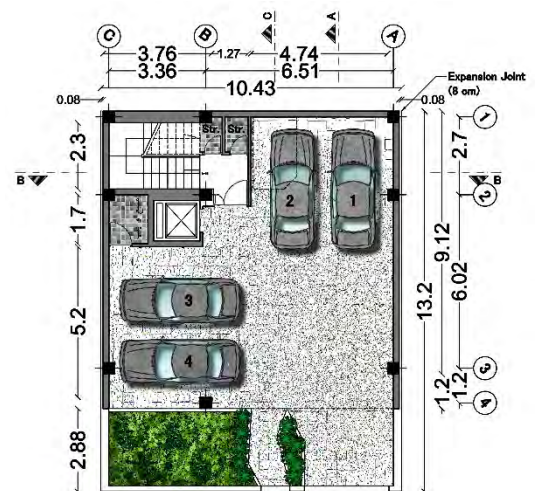


Second Floor Plan



**Darabi Residential Bldg.,** Vesal St., Shiraz, IRAN.

May 2011, this project was a residential building contained 4 apartment units in small scale, **Client:** Darabi, **Area:** 562 m<sup>2</sup>



Ground Floor Plan



Typical Plan (First-5th Floor)



# SEIDAN AND DOROODZAN ELECTRICAL DISTRIBUTION CO. OFFICIAL BLDG.

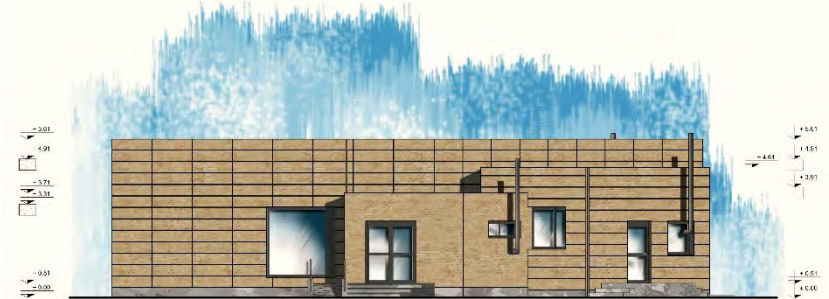
Architectural Portfolio · August 2014 ·

**Seidan Electrical Distribution Co. Bldg., Seidan, Fars, IRAN**

**Client:** Shiraz Electrical Contribution Co.

Sept 2009, as continuation of the cooperation with *P.A.P Consulting Engineers*, Seidan town Electrical Contribution Co. office building was designed.

**Indoor Area:** 358 m<sup>2</sup>, **Open Space Area:** 2570 m<sup>2</sup>



## Legend

1. Entrance
2. Gate
3. Employees' Parking
4. Public Entrance
5. Dispatching Parking
6. Volleyball Court
7. Temporary Store
8. To Official Part
9. Dispatching Entrance
10. Security
11. Residential Entrance
12. Column Store
13. Electrical Tower
14. Water Supply
15. Sign
16. Residential Unit

- Populus trees
- Plantain trees
- Current green trees



**Site Plan**

**Doroodzan Electrical Distribution Co. Bldg., Doroodzan, Fars, IRAN, Client:** Shiraz Electrical Contribution Co.

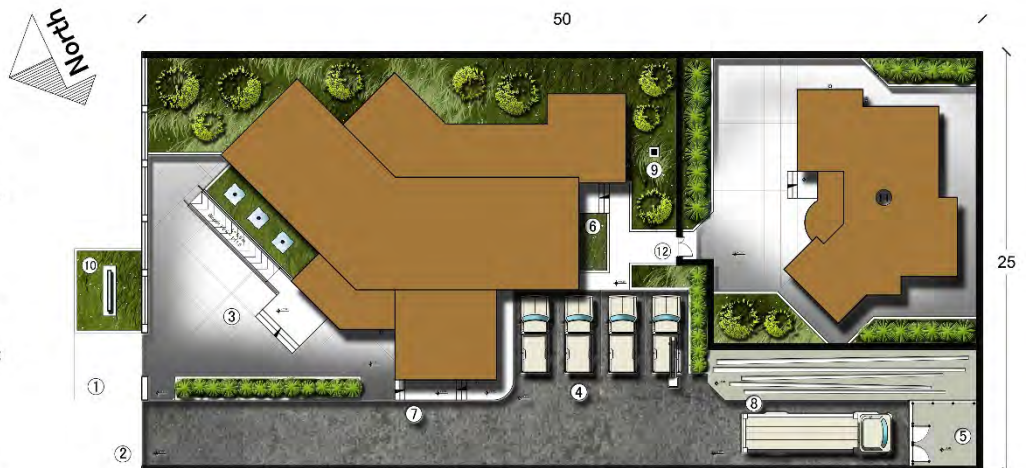
Sept 2009, as the continuation of cooperation with *P.A.P Consulting Engineers*, Doodzan Electrical Contribution Co. office building was designed.

**Indoor Area:** 358 m<sup>2</sup>, **Open Space Area:** 1250 m<sup>2</sup>

## Legend

1. Entrance
2. Gate
3. Public Entrance
4. Dispatching Parking
5. Temporary Store
6. To Official Part
7. Dispatching Entrance
8. Columns Store
9. Electrical Tower
10. Sign
11. Residential Part
12. Residential Entrance

- Populus trees
- Plantain trees
- Current green trees



**Site Plan**



# KAMFIROOZ ELECTRICAL DISTRIBUTION CO. BLDG. ENTRANCE OF THE HAFEZ HALL

Architectural Portfolio · August 2014 ·




**Kamfirooz Electrical Distribution Co. Bldg.,** Kamfirooz, Fars, IRAN

August 2009, the cooperation with *P.A.P Consulting Engineers* continued by designing the Kamfirooz Electrical Contribution Co. office building.

**Client:** Shiraz Electrical Contribution Co., **Indoor Area:** 358 m<sup>2</sup>, **Open Space Area:** 2000 m<sup>2</sup>

## Legend

1. Entrance
2. Gate
3. Employees' Parking
4. Public Entrance
5. Dispatching Parking
6. Storehouse
7. Temporary Store
8. To Official Part
9. Dispatching Entrance
10. Security
12. Column Store
13. Electrical Tower
14. Water Supply
15. Sign
16. Residential Unit
18. Residential unit Entrance

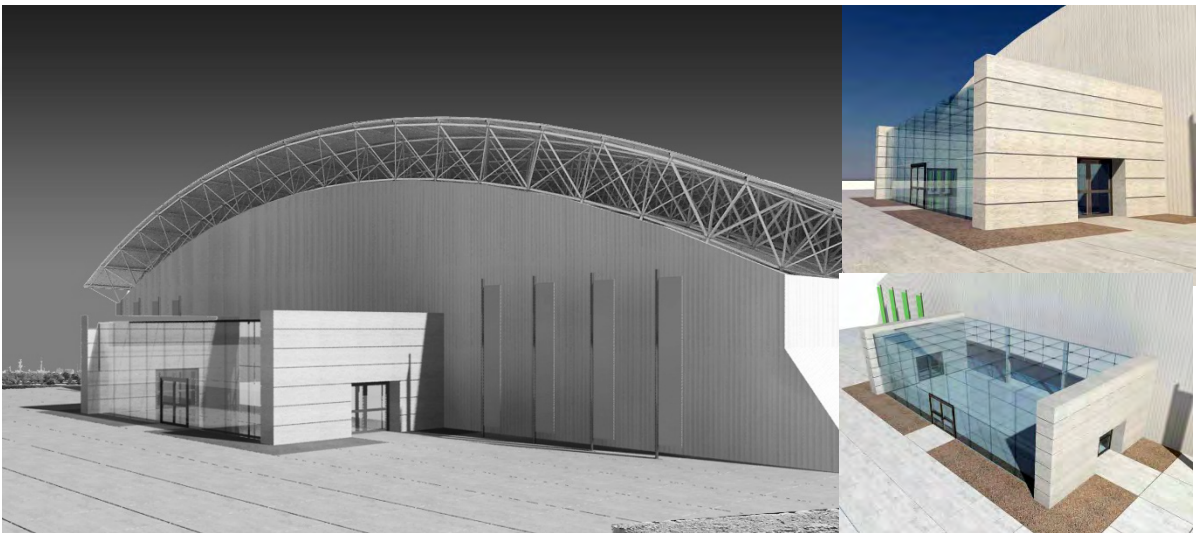
-  Populus trees
-  Plantain trees
-  Current green trees



**Site Plan**

**Entrance of the Hafez Hall.,** Fars International Exhibition, Kamfirooz, Fars, IRAN

Nov 2009, the entrance of a 6000 square meter hall located at Fars International Exhibition permanent site named Hafez Hall, the hugest hall, was designed as the continuation of cooperation with *P.A.P Consulting Engineers*, **Client:** Fars International Exhibition, **Indoor Area:** 181 m<sup>2</sup>







P.A.P. Consulting Engineers

## CONSTRUCTION OF ARSENJAAN & DARIOON ELECTRICAL DISTRIBUTION CO. BLDG.

Architectural Portfolio · August 2014 ·

### **Arsenjaan Electrical Distribution Co. Bldg.,** Arsenjaan, Fars, IRAN

During Jan 2010 – August 2010, during continuation of the cooperation with *P.A.P Consulting Engineers*, participated in the construction of Arsenjaan Electrical Contribution Co. office building as the main project superintendent.

**Client:** Shiraz Electrical Contribution Co., **Indoor Area:** 558 m<sup>2</sup>, **Open Space Area:** 11267 m<sup>2</sup>



### **Darioon Electrical Distribution Co. Bldg.,** Darioon, Fars, IRAN

During Jan 2010 – August 2010, the cooperation with *P.A.P Consulting Engineers* continued by participating in the construction of Darioon Electrical Contribution Co. office building as the main project superintendent.

**Client:** Shiraz Electrical Contribution Co., **Indoor Area:** 402 m<sup>2</sup>, **Open Space Area:** 3500 m<sup>2</sup>







P.A.P. Consulting Engineers

## CONSTRUCTION OF KAMFIROOZ & DROODZAN ELECTRICAL DISTRIBUTION CO. BLDG.

Architectural Portfolio · August 2014 ·

### **Doroodzan Electrical Distribution Co. Bldg.,** Doroodzan, Fars, IRAN

During Jan 2010 – August 2010, and as the continuation of cooperation with *P.A.P Consulting Engineers*, participating in the construction of Doroodzan Electrical Contribution Co. office building was done as the main project superintendent.

**Client:** Shiraz Electrical Contribution Co., **Indoor Area:** 358 m<sup>2</sup>, **Open Space Area:** 1250 m<sup>2</sup>



### **Kamfirooz Electrical Distribution Co. Bldg.,** Kamfirooz, Fars, IRAN

During Jan 2010 – August 2010, during the continuation of cooperation with *P.A.P Consulting Engineers*, participated in the construction of Kamfirooz Electrical Contribution Co. office building as the main project superintendent.

**Client:** Shiraz Electrical Contribution Co., **Indoor Area:** 358 m<sup>2</sup>, **Open Space Area:** 2000 m<sup>2</sup>







P.A.P. Consulting Engineers

## CONSTRUCTION OF SADRA & KAVAR ELECTRICAL DISTRIBUTION CO. BLDG.

Architectural Portfolio · August 2014 ·

### **Sadra Electrical Distribution Co. Bldg.,** Sadra Town, Shiraz, Fars, IRAN

During Jan 2010 – May 2010, this project was done as the continuation of cooperation with *P.A.P Consulting Engineers*, participated in the construction of Sadra Electrical Contribution Co. office building as the main project superintendent.

**Client:** Shiraz Electrical Contribution Co., **Area:** 455 m<sup>2</sup>



### **Kavar Electrical Distribution Co. Bldg.,** Kavar, Fars, IRAN

During Jan 2010 – August 2010, participating in the construction of Kavar Electrical Contribution Co. office building as the main project superintendent, was the continuation of cooperation with *P.A.P Consulting Engineers*.

**Client:** Shiraz Electrical Contribution Co., **Area:** 400 m<sup>2</sup>



2010/05





P.A.P. Consulting Engineers

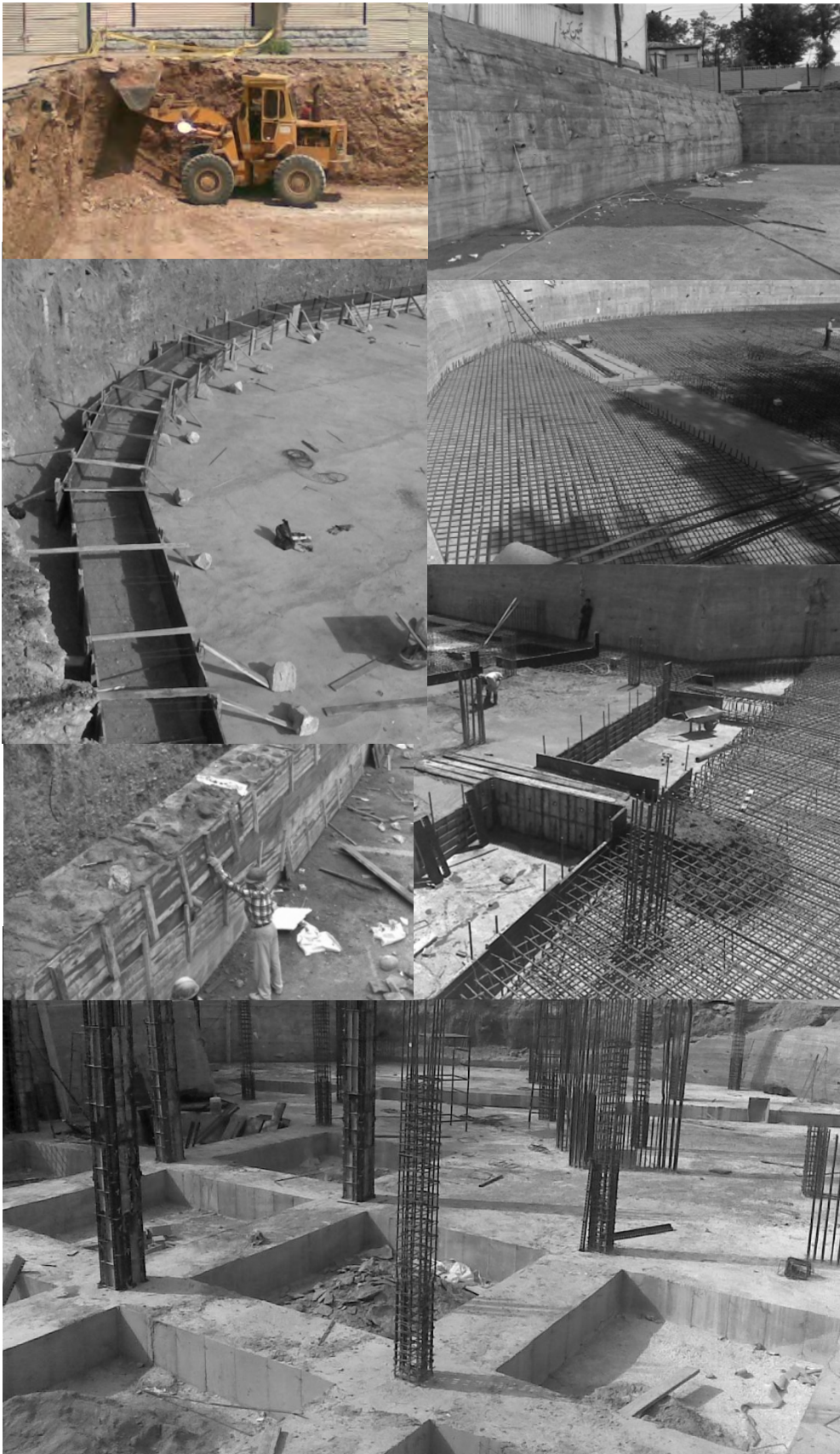
# CONSTRUCTION OF SHIRAZ ELECTRICAL DISTRIBUTION CO. BLDG. (BRANCH 3)

Architectural Portfolio · August 2014 ·

**Shiraz Electrical Distribution Co. Bldg. (Branch 3)**, Fakhrrabad St., Shiraz, Fars, IRAN

During Jan 2010 – May 2010, as the continuation of cooperation with *P.A.P Consulting Engineers*, in the construction of Shiraz Electrical Distribution Co. (Branch 3) office building participated as the main project superintendent.

**Client:** Shiraz Electrical Contribution Co., **Area:** 2045 m<sup>2</sup>







# MARVDASHT ELECTRICAL DISTRIBUTION CO. INN-CULTURAL CENTER BLDG. / ATHLETIC COMPLEX

Architectural Portfolio - August 2014

## Marvdasht Electrical Distribution Co. Inn-Cultural Center Bldg., Marvdasht, Fars, IRAN

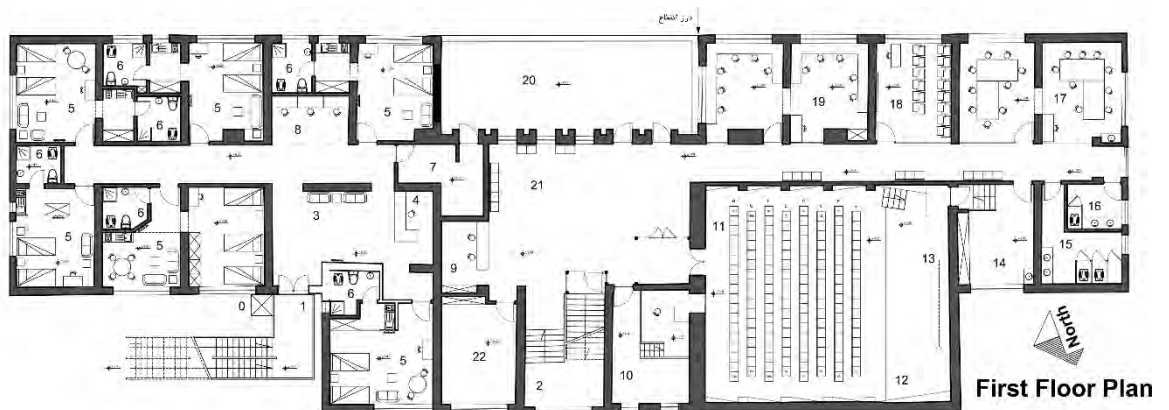
July 2010, this project shaped the continuation of cooperation with *P.A.P Consulting Engineers*, which contained a major part as cultural center, for artistic educations, and a subsidiary part as an inn for employees of Tavanir Co. from whole the country, the parent company that the Marvdasht Electrical Distribution Co. was a subset of it. Indeed this design was to reconstruct an old abandoned building in Marvdasht City.

**Client:** Shiraz Electrical Contribution Co., **Indoor Area:** 912.6 m<sup>2</sup>, **Open space Area:** 2344 m<sup>2</sup>



### Legend

0. Lift
1. Inn Entrance
2. Cultural Center Entrance
3. Lobby
4. Information
5. Inn Room
6. Bath Room
7. Utility Room & Store
8. Internet Room
9. Cultural Center Information
10. Projection Room
11. Auditorium (140 Seats)
12. Scene
13. Projection Screen
14. Scene Room
15. Men's Restroom
16. Lady's Restroom
17. Workshop
18. Classroom



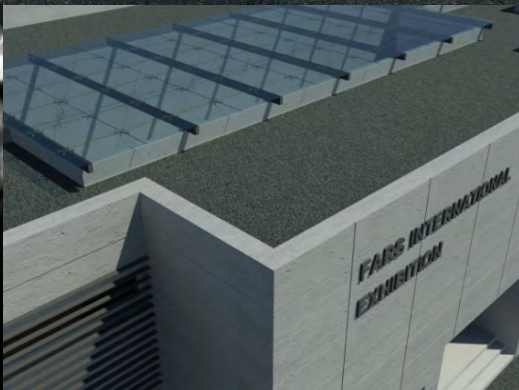
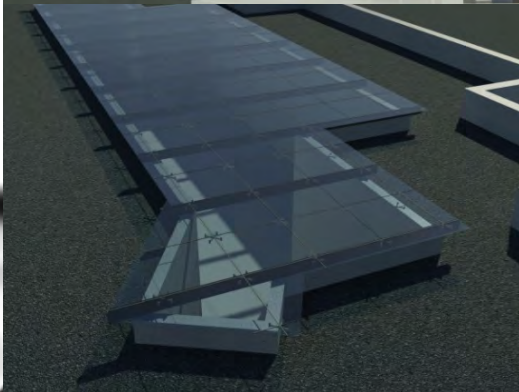
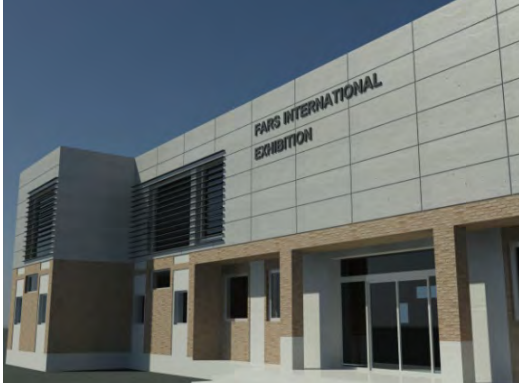
## Marvdasht Electrical Distribution Co. Athletic Complex, Marvdasht, Fars, IRAN

August 2010, designing an outdoor Athletic Complex was the purpose of this project which was owned by Marvdasht Electrical Distribution Co., include football field, tennis court, handball court and etc.

**Client:** Shiraz Electrical Contribution Co., **Area:** 30000 m<sup>2</sup>





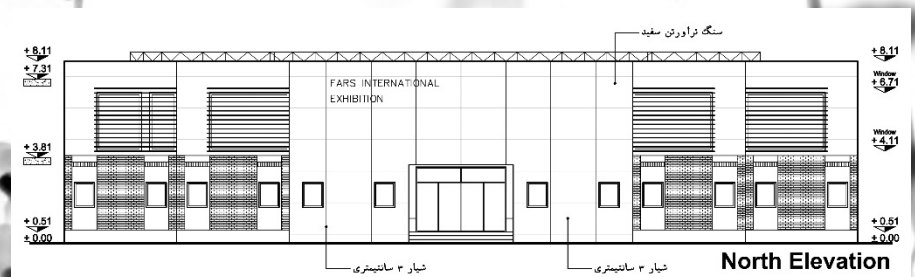
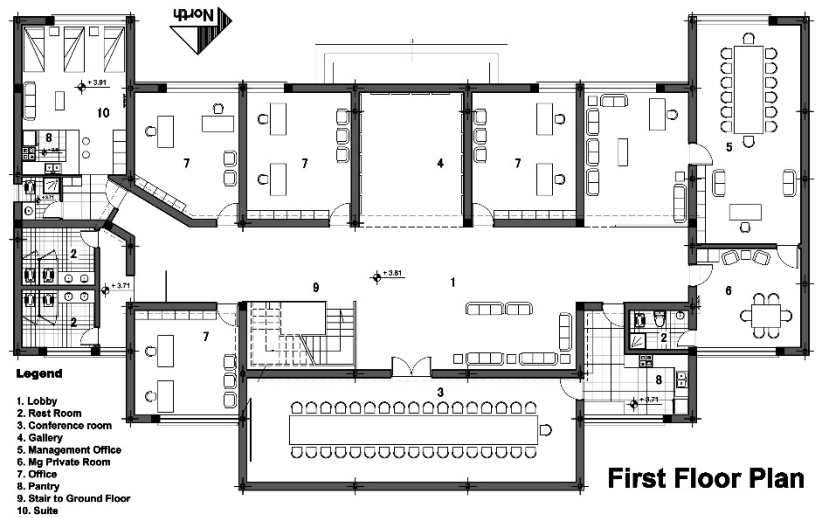


**Fars International Exhibition Office Bldg.,** Official & management Building, Golestan Town, Shiraz, IRAN

Sep. 2010, this project presented as a developing project by adding an extra level to the current available building with official function.

**Client:** Fars International Exhibition Co.

**Area:** 1160 m<sup>2</sup>





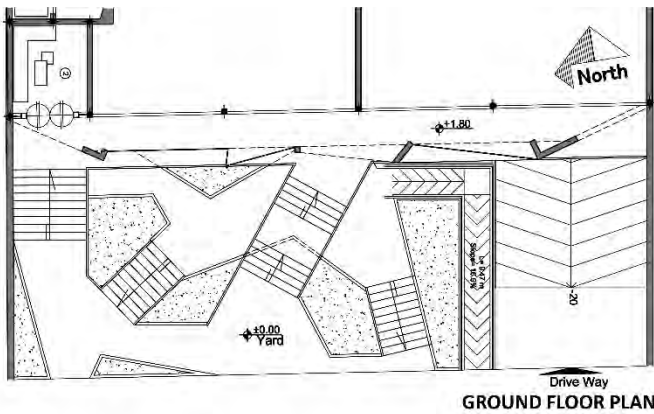
# DEBENHAMS BLDG. (NOORIEH BLDG.)

Architectural Portfolio · August 2014 ·

**Noorieh Bldg.,** Multi Units Commercial Complex Building, Sattar Khan St., Shiraz, IRAN.

Dec. 2010, at the process of cooperation with *P.A.P. Consulting Engineers*, this multi-unit commercial building as a luxury brands store was designed and was followed by supervision on construction process, finally at the end of construction process, the owner's purpose changed to Debenhams brand.

**Client:** Kazem Noori







P.A.P. Consulting Engineers

# SAMSUNG CENTRAL SHOWROOM BLDG.

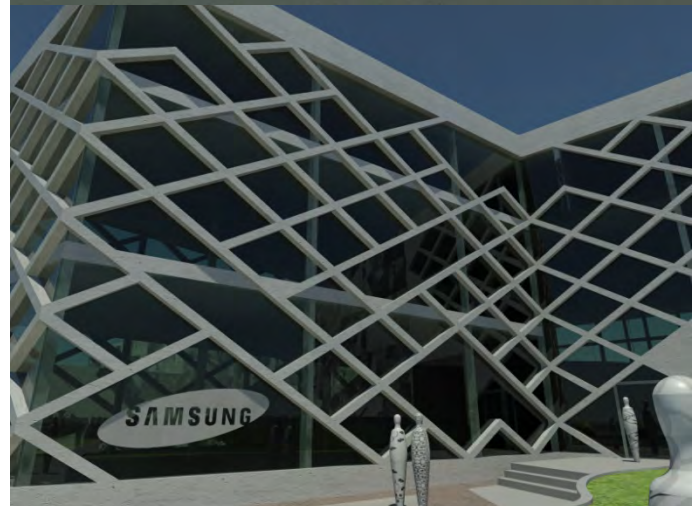
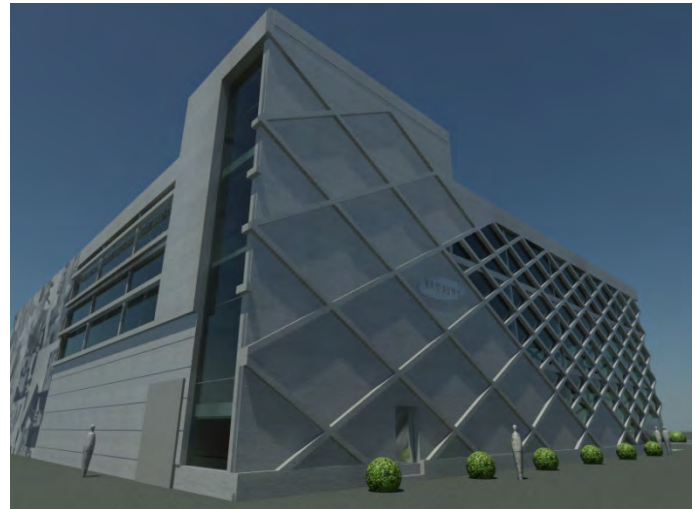
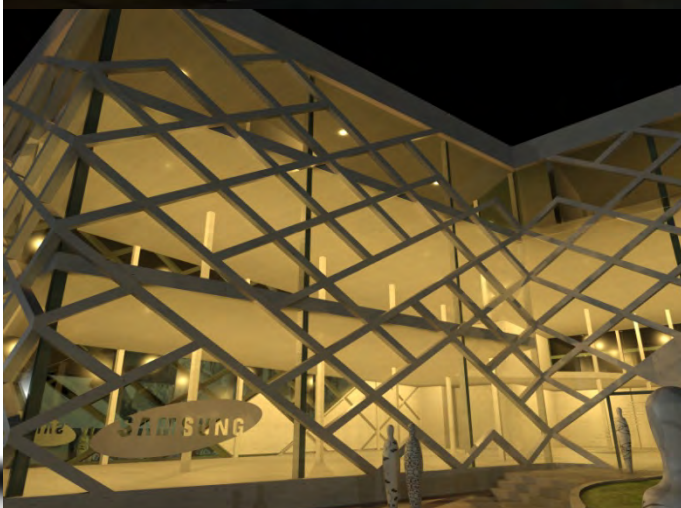
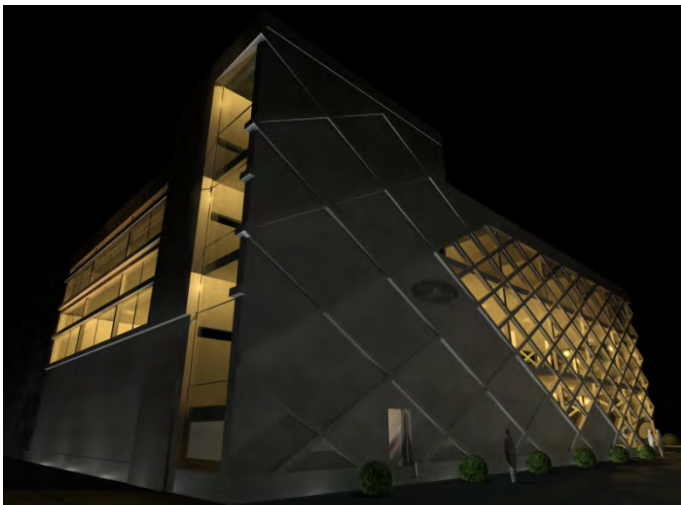
Architectural Portfolio · August 2014 ·

**SAMSUNG Bldg.**, SAMSUNG Shiraz's Central Showroom Building, Sattar Khan St., Shiraz, IRAN.

Aug. 2011, continuation of the cooperation with *P.A.P. Consulting Engineers* was followed by designing Central Building of SAMSUNG on the purpose of showing and selling the SAMSUNG's Products and preparing customer's service dept.

**Client:** Mirsadeghi-Noori

**Area:** 4735 m<sup>2</sup>



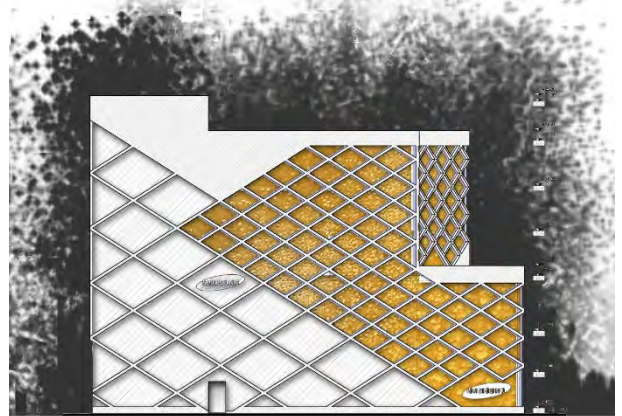


SAMSUNG CENTRAL SHOWROOM BLDG.

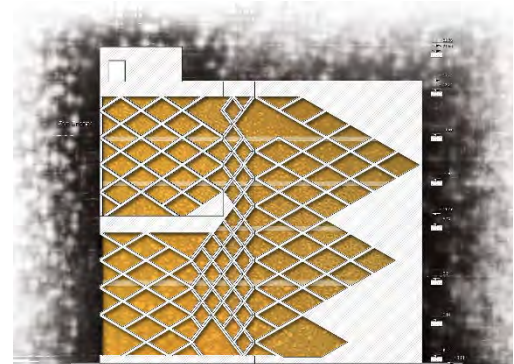
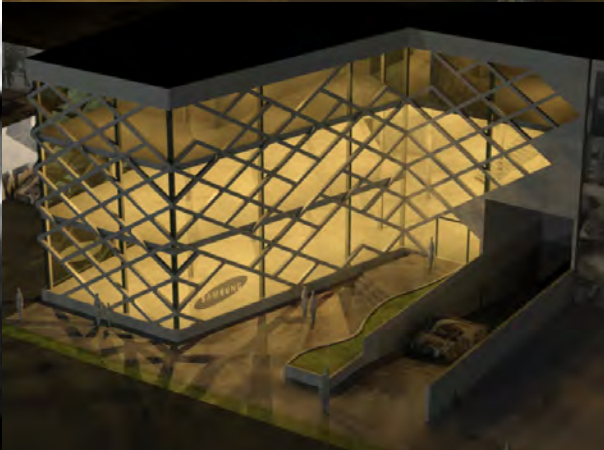
Architectural Portfolio · August 2014 ·



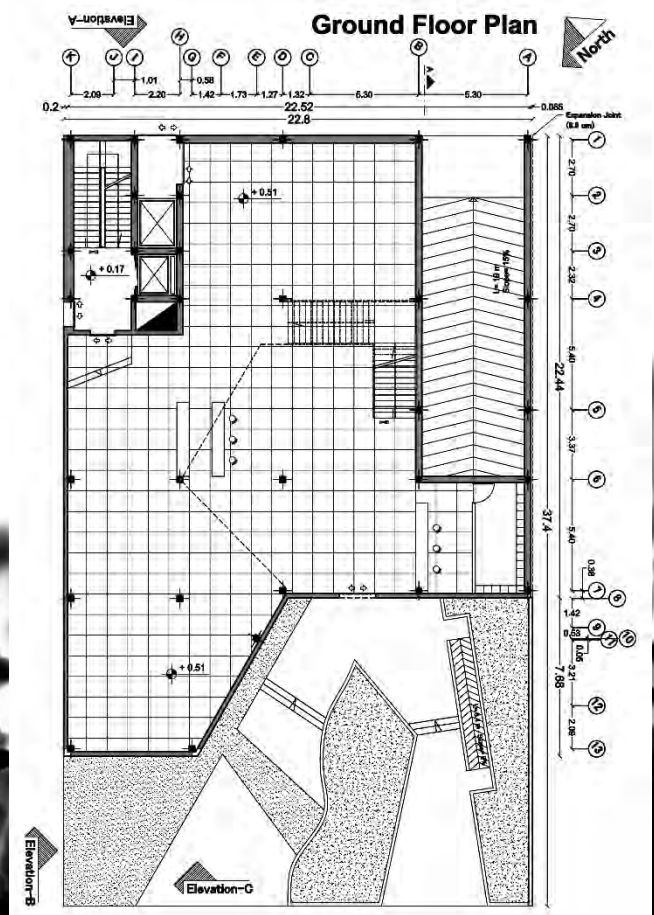
### Elevation A



### Elevation B



Elevation C

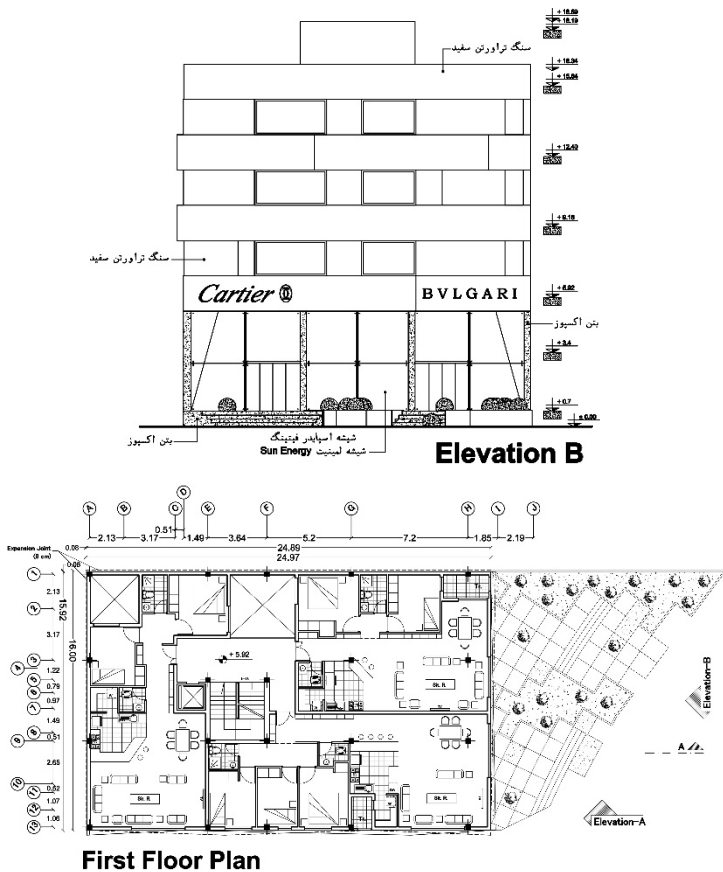




**Talebi Bldg.,** Besat St., Shiraz, IRAN.

Sept. 2011, in pursuance of the cooperation with *P.A.P. Consulting Engineers*, This building was designed as a residential building combined with luxury brands jewelry stores like Cartier & Bvlgari.

**Client:** Talebi, **Area:** 2582 m<sup>2</sup>







P.A.P. Consulting Engineers

# RESIDENTIAL BUILDINGS

Architectural Portfolio - August 2014 -

**Hosseini Residential Bldg.,** Lardi Bezin, Shiraz, IRAN.

March 2012, This Project designed as a residential building with 3 apartment units.

**Client:** Reza Hosseini

**Area:** 597 m<sup>2</sup>



ELEVATION

**Hossein Pour Bldg.,** Lardi Bezin, Shiraz, IRAN.

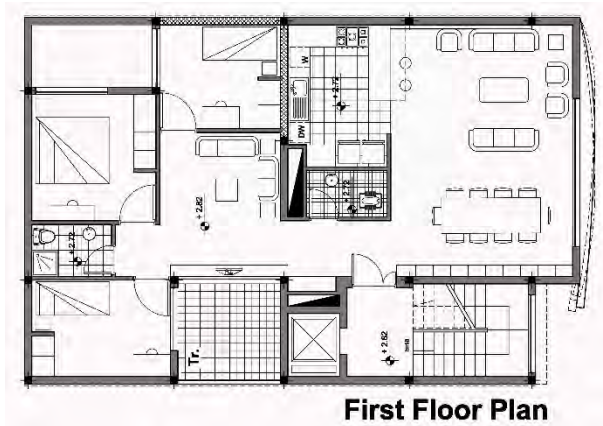
A 2013, this building designed to be a residential building with 3 apartment units.

**Client:** Ali Hossein Pour

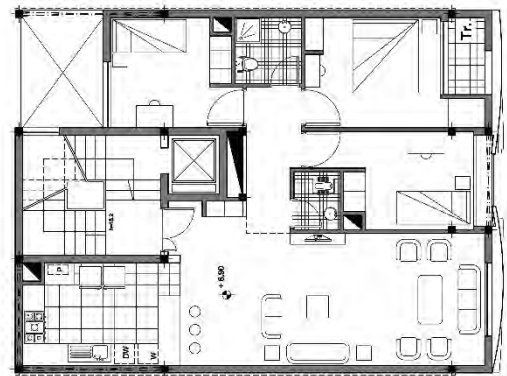
**Area:** 550 m<sup>2</sup>



ELEVATION



First Floor Plan



3th Floor Plan







P.A.P. Consulting Engineers

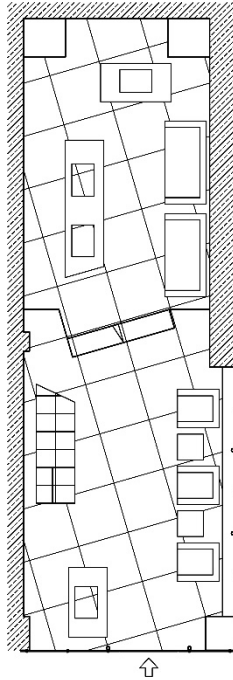
# GARB REAL ESTATE OFFICE BLDG.

Architectural Portfolio - August 2014 -

**Gharb Real Estate Office**, Ghasrdasht St., Shiraz, IRAN.

June 2012, pursuance of cooperation with *P.A.P. Consulting Engineers* was followed by designing and managing construction of the Office of Gharb Real Estate positioned in one of the fanciest region in Shiraz city. During designing process, using new materials & products was considered, even this point of view approached to extraordinary unusual materials like unusual dimensioned stones, using unpolished particle board as wall cover, unusual stair fencing and handmade LED Lighting systems and etc.

**Client:** Mohammad Noori







P.A.P. Consulting Engineers

# CONSTRUCTION OF HOSSEINI RESIDENTIAL BLDG.

Architectural Portfolio · August 2014 ·

**Hosseini Residential Bldg.**, Lardi Bezin, Shiraz, IRAN.

During May 2012-August 2014, managing the construction of this residential building contained 3 apartment units, was operated as the continuation of cooperation with *P.A.P. Consulting Engineers*.

**Client:** Hosseini

**Area:** 597 m<sup>2</sup>







P.A.P. Consulting Engineers

# DR. SADR ARHAMI PATHOBIOLOGY LAB

Architectural Portfolio - August 2014

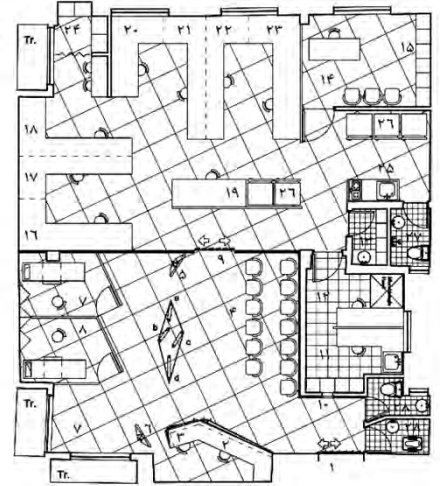
**Dr. Sadr Arhami Pathobiology Lab**, Ghasrdasht St., Shiraz, IRAN.

July 2012-May 2013, this pathobiology laboratory was designed as the continuation of my cooperation with *P.A.P. Consulting Engineers*, and its construction process managed. The main concept for designing was attention to meaning of the word "to Factorize" which contains the real covered concept of the activities which are done by pathobiologists in medical laboratories, **Client:** Dr. Sadr Arhami



## LEGEND

1. Entrance
2. Counter
3. Information
4. Foyer
5. Commercial TV
6. TV
7. Adult Sampling
8. Children Sampling
9. To technical part
10. Sam[ples Location
11. Parasitology part
12. Microbiology part
13. Washing room
14. Manager room
15. Archives
16. Hematology Part
17. Biochemical Part
24. Closets
25. Pantry







P.A.P. Consulting Engineers

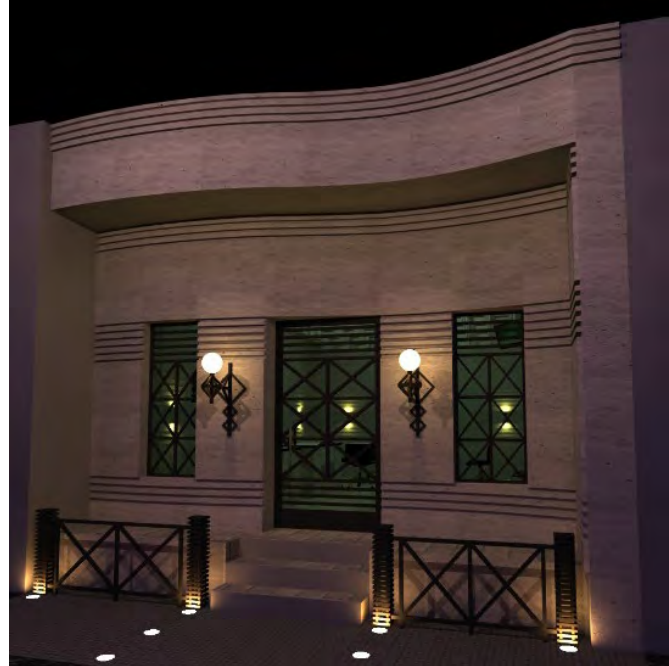
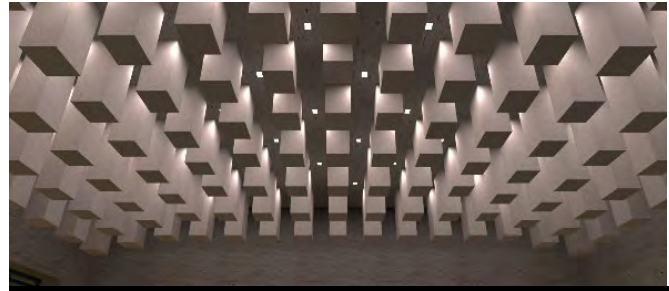
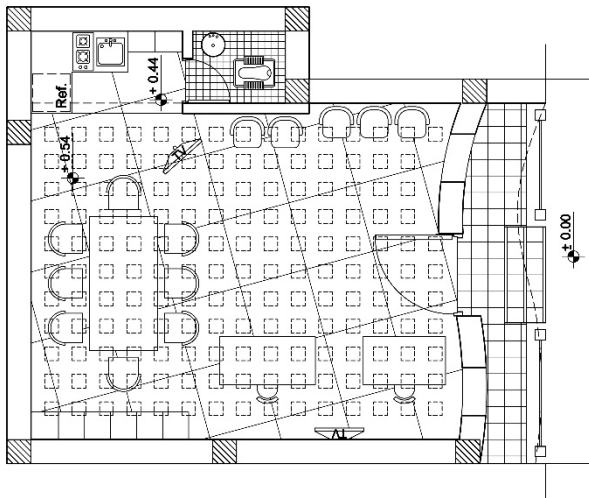
# SHARIFI'S CEREMONY HALL OFFICE

Architectural Portfolio - August 2014 -

**Sharifi's Ceremony Hall Office**, Ghaemieh City, Fars, IRAN.

Jan. 2013, as continuation of the cooperation with *P.A.P Consulting Engineers*, Management Office of a ceremony hall in Ghaemieh city was designed. According to the function of ceremony halls, the project's luxury purpose and price of construction mission, during designing process, using expensive luxury materials place in designing process occupied by making fancy shapes with low price materials.

**Client:** Sharify





**Zarifsanaiey Residential Bldg.**, Ghasrdasht St., Shiraz, IRAN.

During July 2013-August 2014, in pursuance of the cooperation with *P.A.P. Consulting Engineers*, Managing the construction of this residential building contained 6 apartment units, was operated.

**Client:** Zarifsanaiey

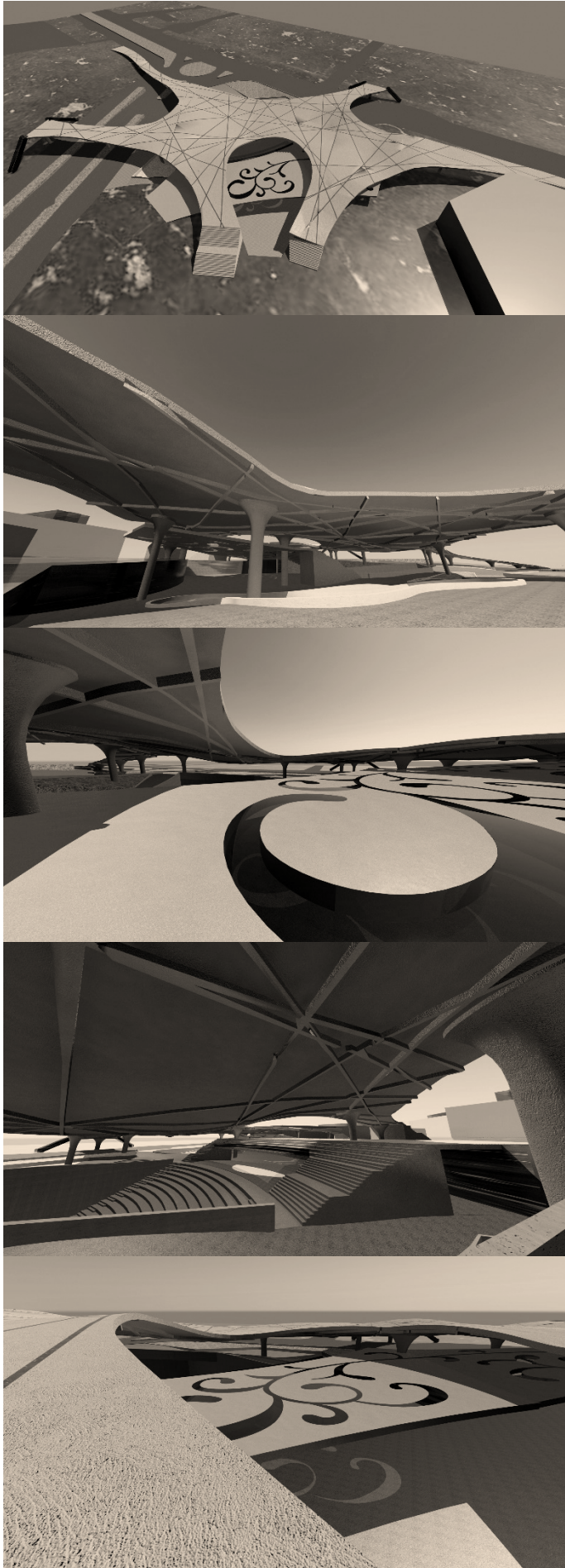
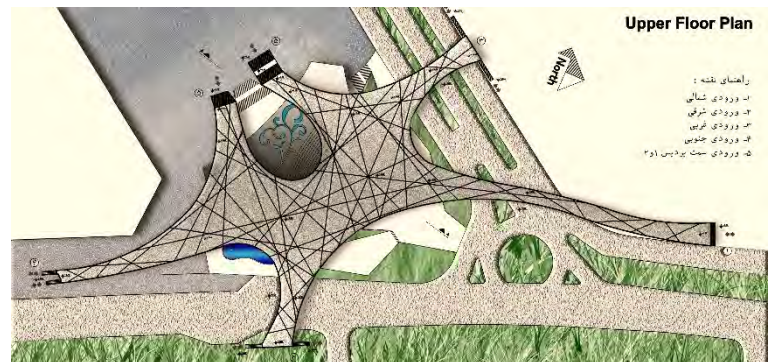
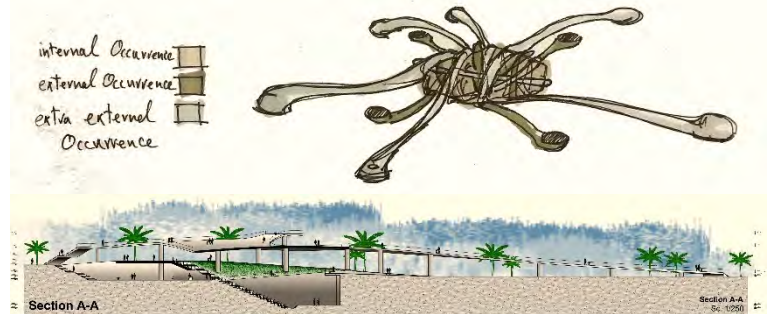
**Area:** 1317 m<sup>2</sup>





## Kish City Center, Kish Island, IRAN.

Feb. 2014, during master degree at Tehran University, Architectural Design studio I course, design a main city center for Kish Island, as a recreational island, at its commercial heart located at the joint of two main streets was the basic goal of this project, therefore 3 phases of actions defined; Internal Occurrence, External Occurrence and Extra-external Occurrence. Design was guided to obtain an urban node as a prepared context for social autonomous occurrences.







P.A.P. Consulting Engineers

# NOORI RESIDENTIAL BLDG.

Architectural Portfolio - August 2014



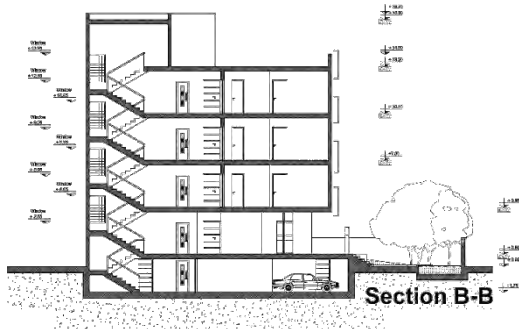
Elevation A

**Noori Residential Bldg.**, Tachara Blvd., Shiraz, IRAN.

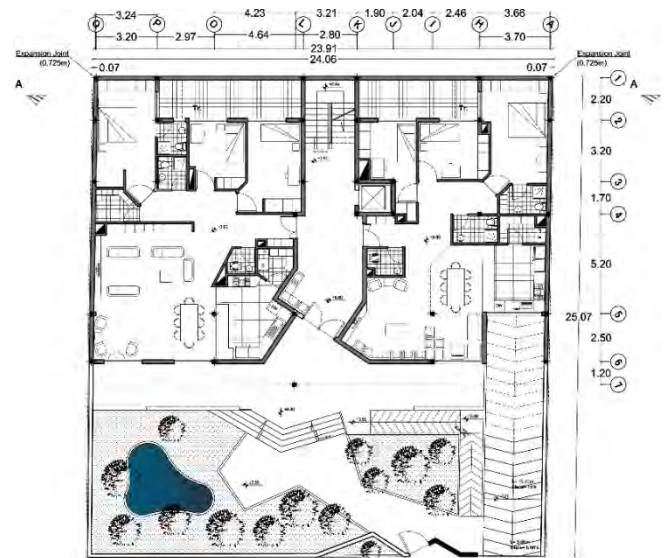
March 2014, this building was designed as a residential building with 11 apartment units, during the cooperation with *P.A.P. Consulting Engineers*.

**Client:** Kazem Noori

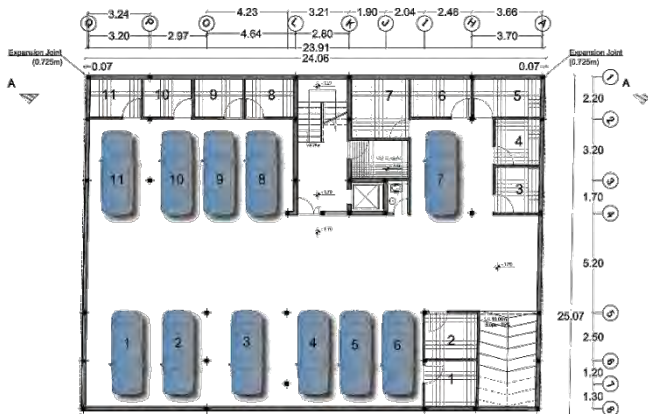
**Area:** 1990 m<sup>2</sup>



Section B-B



Ground Floor PLAN



First Floor PLAN



First Floor PLAN





P.A.P. Consulting Engineers

# MOSLEMI APARTMENT UNIT

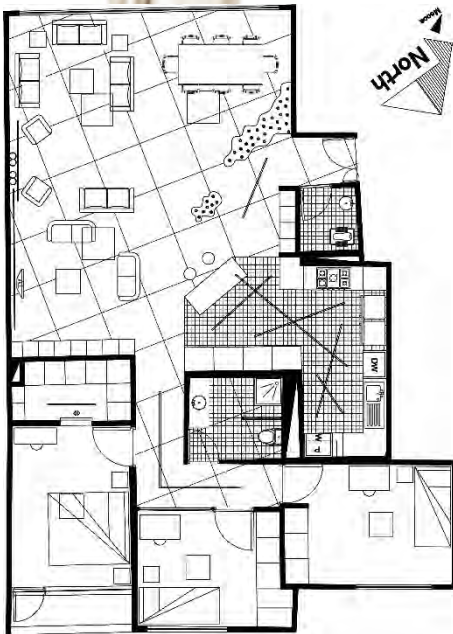
Architectural Portfolio · August 2014 ·

**Moslemi Apartment Unit**, Ghasrdasht St., Shiraz, Fars, IRAN.

April 2014, interior designing of an apartment and its managing construction as the cooperation with *P.A.P. Consulting Engineers* was done.

**Client:** Moslemi

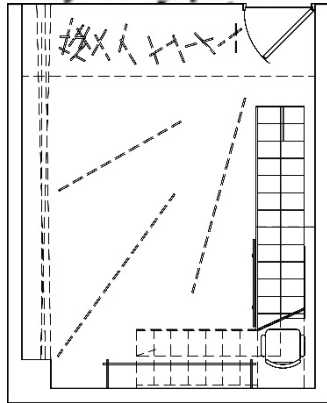
**Area:** 142.4 m<sup>2</sup>



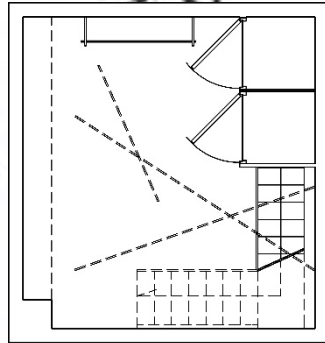


# 4104 COMMERCIAL UNIT

Architectural Portfolio · August 2014 ·



GROUND FLOOR PLAN



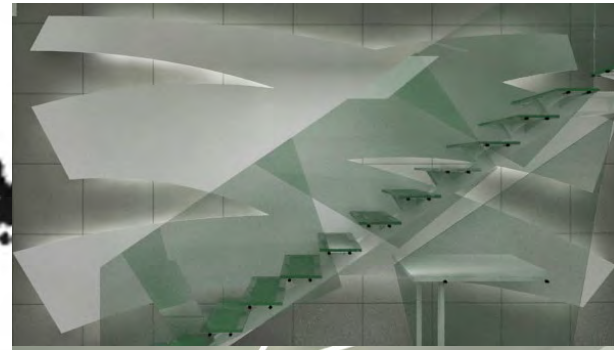
First FLOOR PLAN

**4104 Commercial Unit**, Persian Gulf Mall, Shiraz, Fars, IRAN.

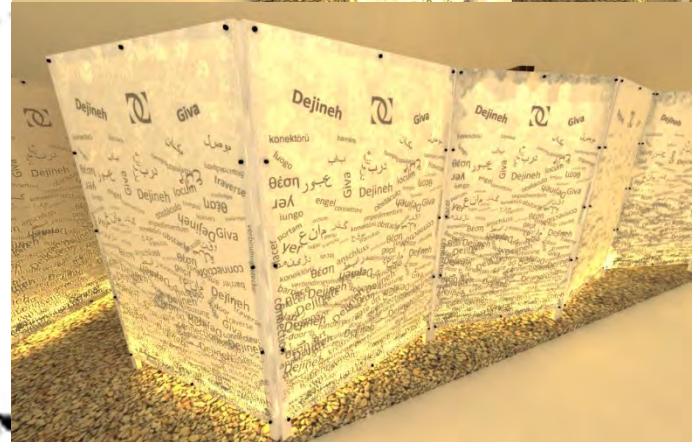
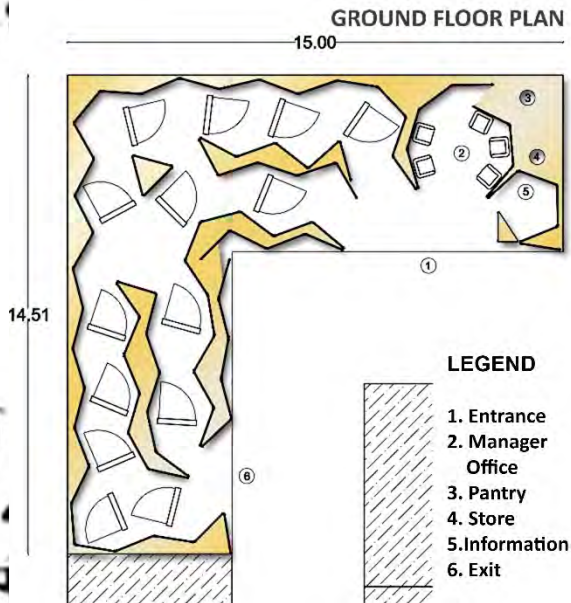
May 2014, a commercial unit located at *Persian Gulf Mall* was designed and its construction managed as continuation of the cooperation with *P.A.P. Consulting Engineers*. This unit was designed for the purpose of flexible commercial usages as Shoe Store, gift shop and toys store.

**Client:** Amin Samimi

**Area:** 36 m<sup>2</sup>







**The Pavilion of Giva Co. (Dejineh Door),** Fars International Exhibition, Golestan Town, Shiraz, Fars, IRAN.

May 2014, designing the Pavilion of *Giva Co.* at *2014 Shiraz Construction Exhibition* was done as continuation of cooperation with *P.A.P. Consulting Engineers*, This pavilion was designed for the purpose of showing the newest models of Interior Doors that the products of *Dejineh Door Co.* contained.

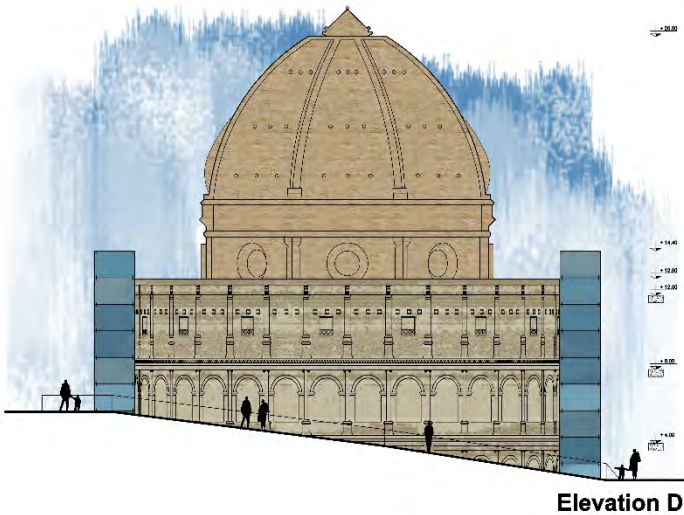
**Client:** Yaaghoob Basirat

**Area:** 125.9 m<sup>2</sup>

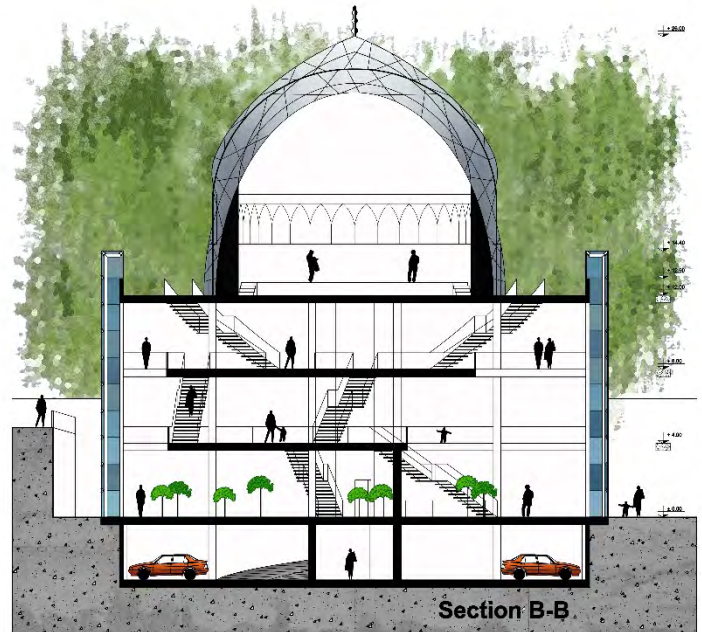


Iran-Italy Friendship Association Bldg., Pour Ebtehaj St., Tehran, IRAN.

July 2014, during master degree at Tehran University and passing Architectural Design studio II course this project defined to be the Iran-Italy Friendship Association main building, in 5 floors, in Iran. The main concept, "Betwixt Land", considered to be the leader of designing to control creating of shapes, spaces, details, addressees' impressions. Therefore focusing on meaning of "Betwixt Land" was the main step, and the next step was to shape it. **Area:** 4241 m<sup>2</sup>

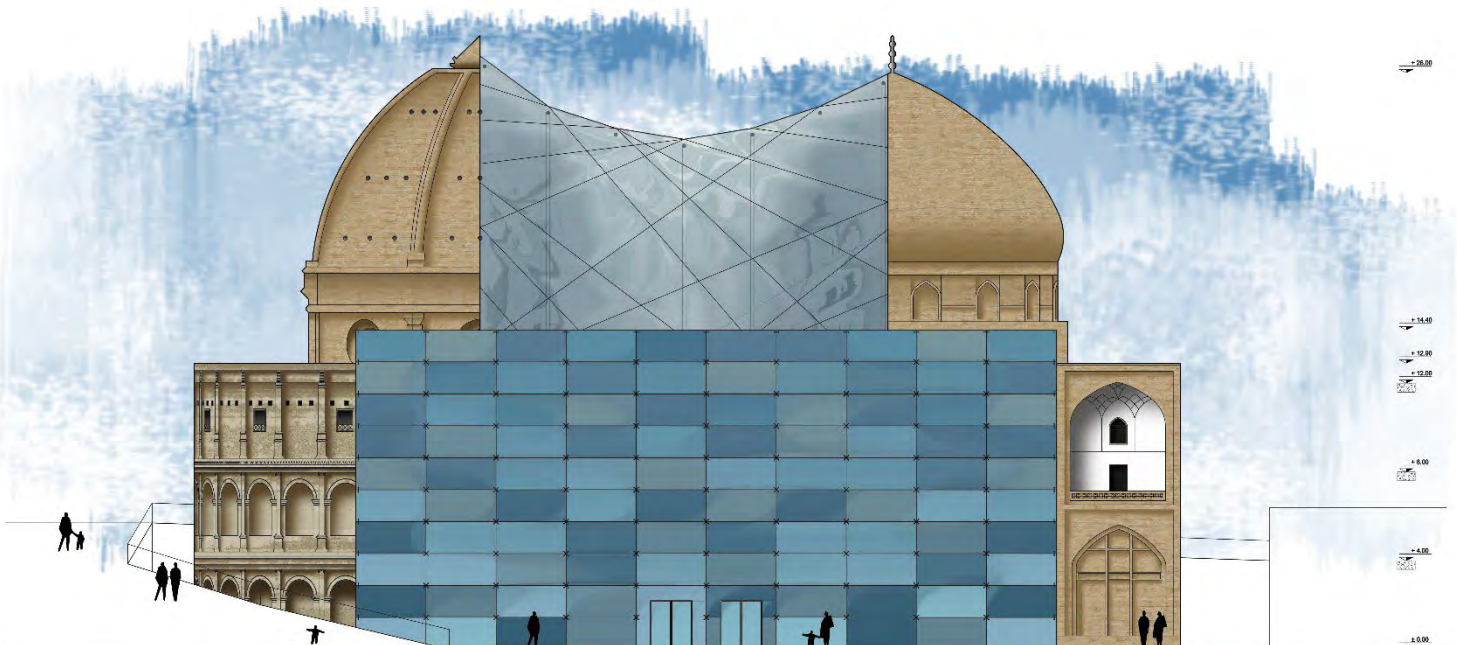


Elevation D



Section B-B

هدف عرصه ای است جهت حصول دوستی دو ملت، دو توده، دو فرهنگ، ... و این دو و هر کدام منحصرأ متکی است بر آنچه دستاورد توده، ملت، فرهنگ، تاریخ و تمدن خود می خوانند، صاحب سمت و سو ست، و نمی تواند که عاری از آن باشد؛ ترک همه آن به مثابه دست شستن از دستاوردهای صدها و دهه های گذشته خود تلقی می کند، که هویت خود می داند و بدون آن گمشده و تهی دست. سمت و سوی هر تعاملی را همین عقبه ها هدایت و راهبری دارند که پشتوانه اند و دارایی. اما دوستی، منحصرأ و بدون لحاظ نمودن اهداف غایی منتج از آن، ذاتاً میسر نیست مگر به الزامی، و آن الزام، رهاسازی است بلا واسطه، بلا واسطه عقبه ها و زمینه ها، و حضور بدون پشتوانه، که تعامل است و نه تقابل و چون عرصه تقابل نیست، پشتوانه نمی طلبد؛ که پشتوانه اینجا مانع است و انحراف ساز روند دوستی چرا که سمت و سو ساز است. اینجا است که عرصه وقوع و حصول دوستی مستلزم تعریف سرزمین میان (Betwixt Land) است؛ که نه این سویی است و نه آن سویی و نه هر دو سویی (هر دو سویی به معنای تأمین اشتراکات)، و واضح است که تأمین اشتراکات به شرط وجود اشتراکات معنا می گیرد، حال آن که اشتراکات غیر از آن که خود سمت و سو سازند و مانع، به وجودشان شک و تردید عمیق است؛ چرا که آنچه مفروض مشترکات فرهنگی و تمدنی دو توده است حتی با وجود تشابهات ظاهری، از آن جا که ریشه ها و عرصه ها و عامل شکل گیری و شکل دهنده و به طور کل نقطه آغاز یکسان و یا حتی مشابه ندارند، شبه تشابه اند و متعارض. سرزمین میان، عاری است؛ عاری از هر تعلق به این و آن و حتی غیر آنان، بکر است، این همان جایی است که دوستی امکان حصول و وقوع دارد و بس.



Elevation A

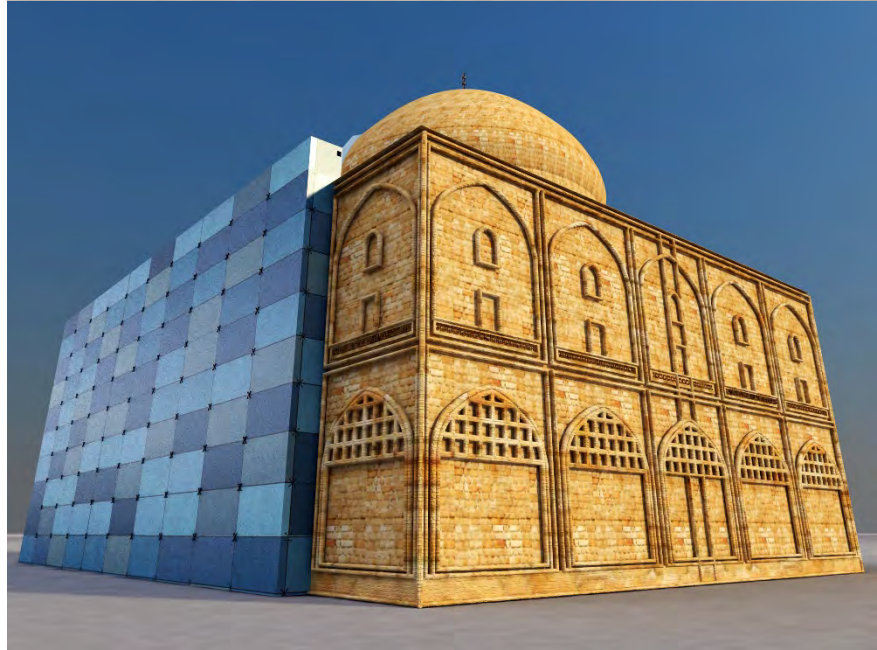
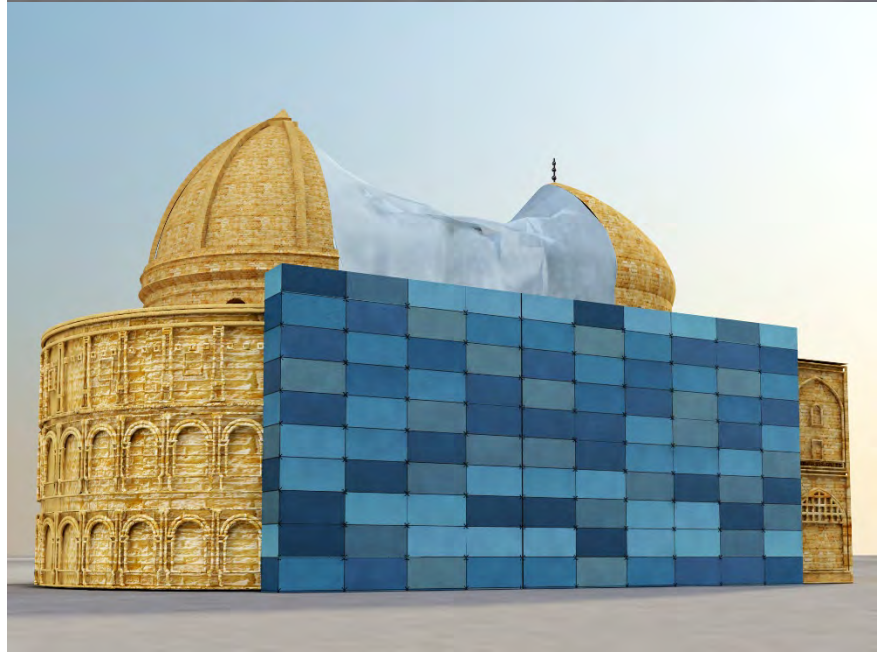
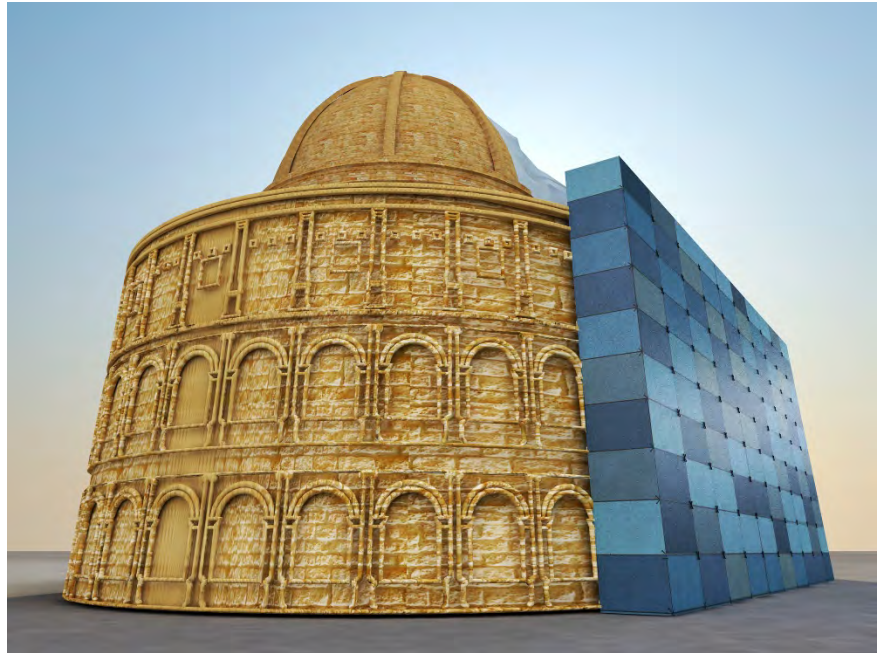
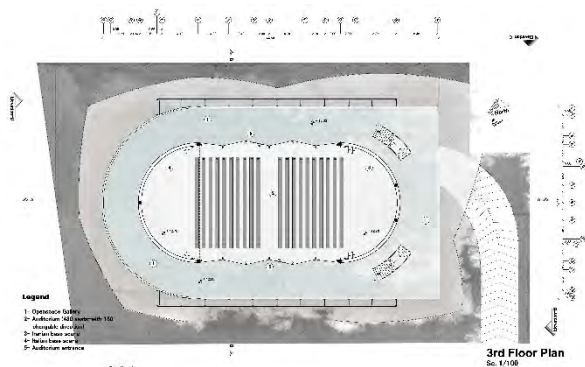
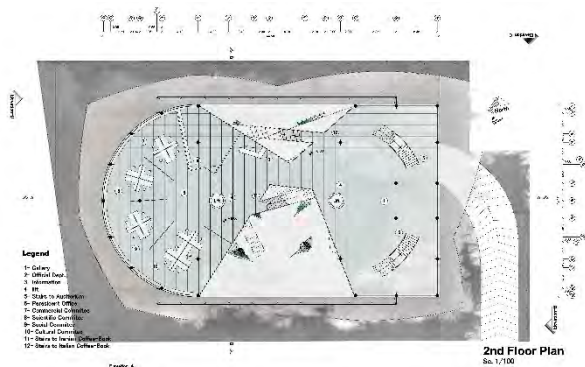
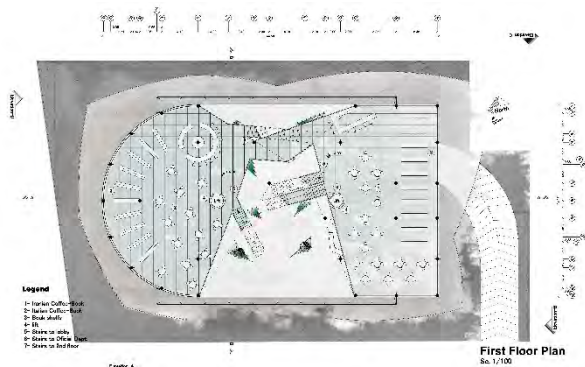
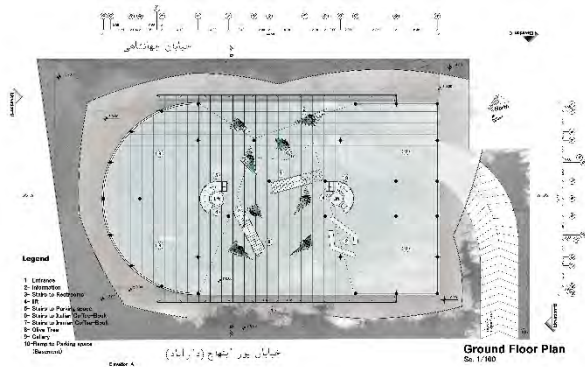
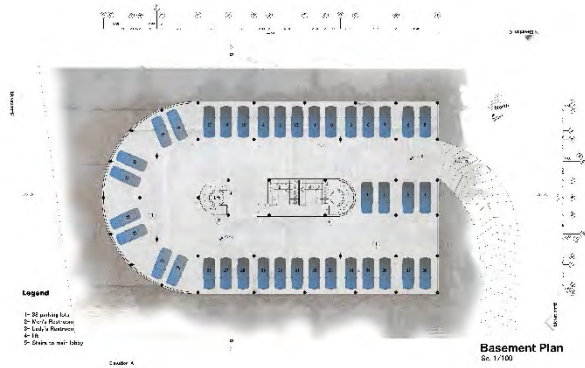




P.A.P. Consulting Engineers

# IRAN-ITALY FRIENDSHIP ASSOCIATION BLDG.

Architectural Portfolio - January 2015



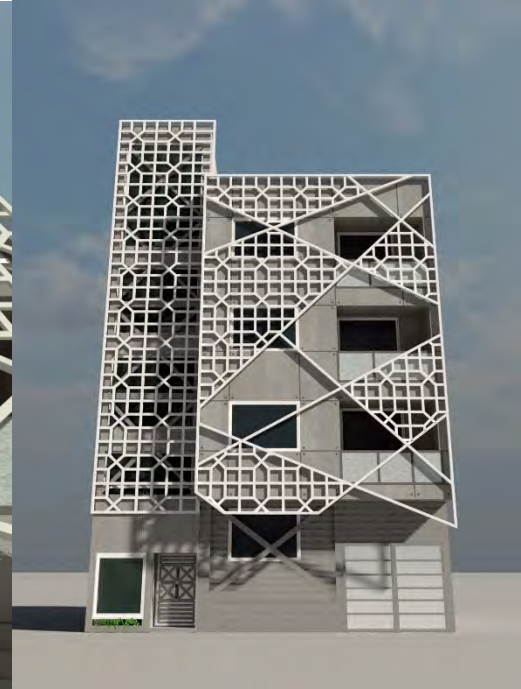




P.A.P. Consulting Engineers

# ZARIFSANAIEY RESIDENTIAL BLDG.

Architectural Portfolio - August 2014 -

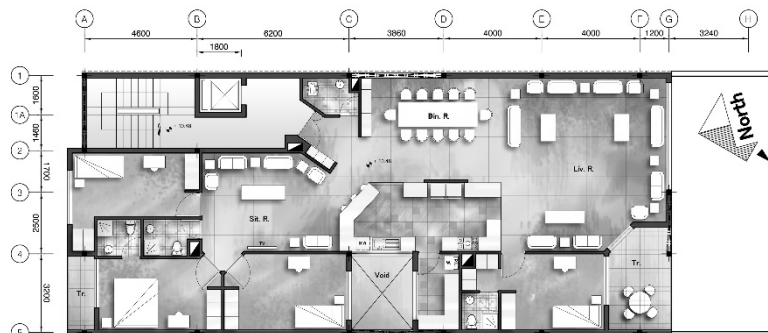


**Zarifsanaiey Residential Bldg.,** Ghasrdasht St., Shiraz, IRAN.

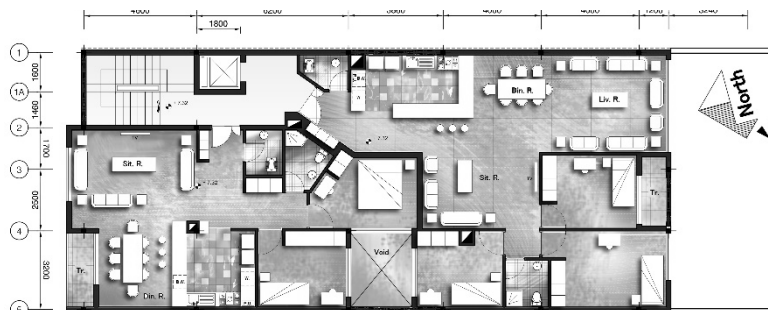
July 2014, as continuation of the cooperation with *P.A.P. Consulting Engineers*,  
This building was designed as a residential building with 6 apartment units.

**Client:** Reza Zarifsanaiey

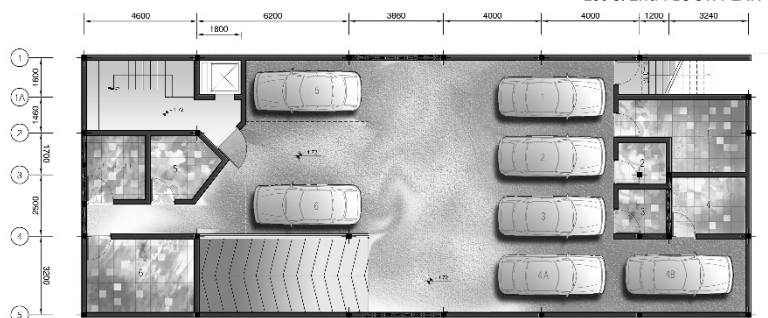
**Area:** 1317 m<sup>2</sup>



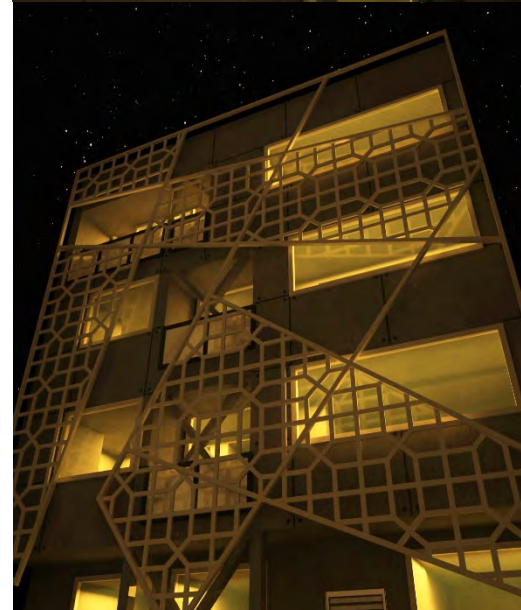
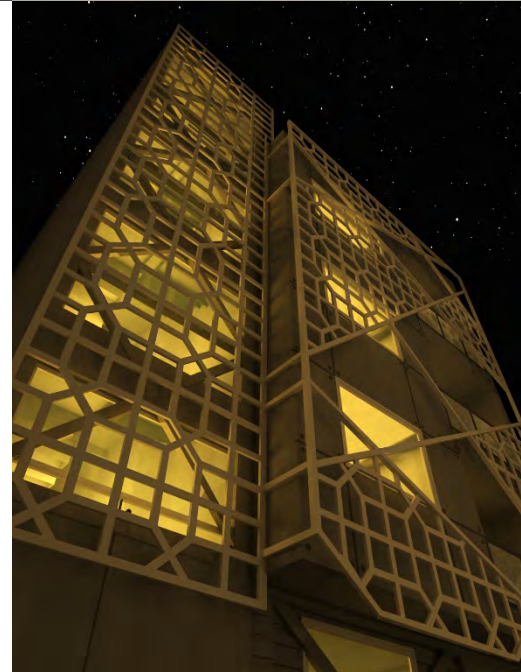
**3rd FLOOR PLAN**



**1st & 2nd FLOOR PLAN**



**Basement PLAN**



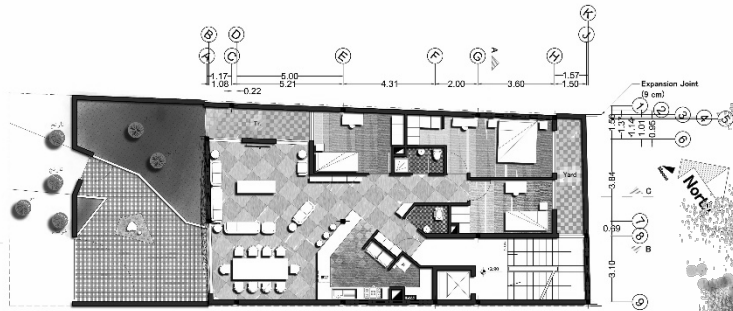


**Shayesteh Residential Bldg.**, Vesal St., Shiraz, IRAN.

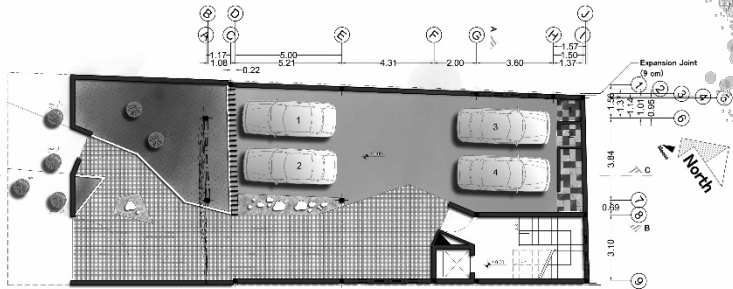
November 2014, a five floored residential building contained 4 apartment units was designed during this project. During design process, the context of project considered more than other aspects, because it was located at a place which was the time-local border between past eras and the start point of a wave-movement called "Transition Period" in Iranian architecture. Therefore, shaping the meaning of that wave formed a virgin concept.

**Client:** Shayesteh

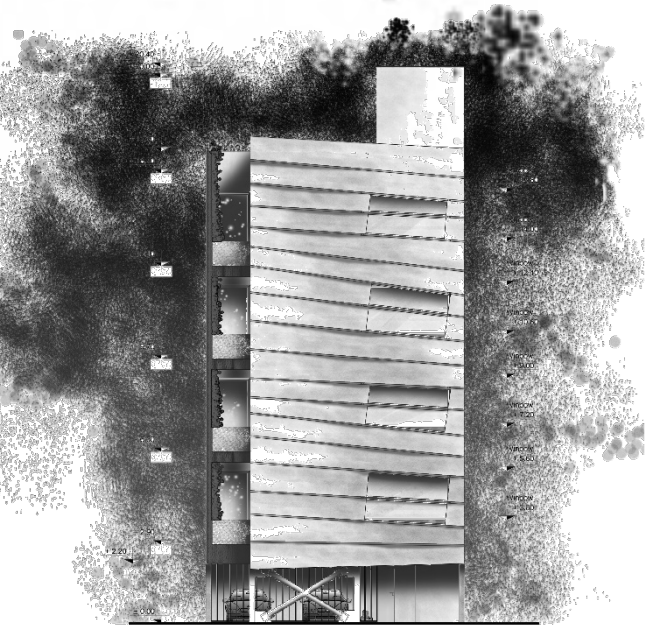
**Area:** 856 m<sup>2</sup>



First Floor PLAN



Ground Floor PLAN



South Elevation





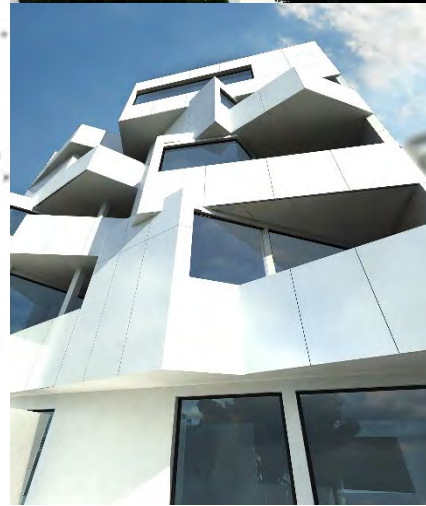
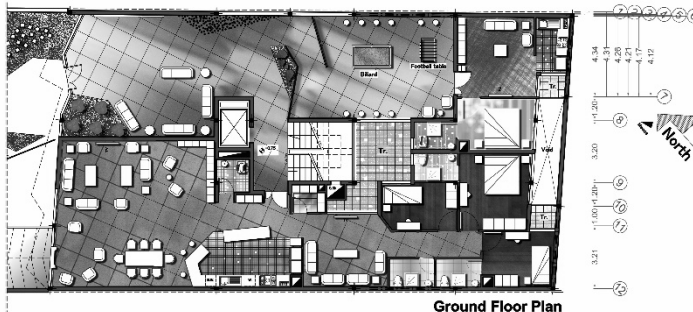
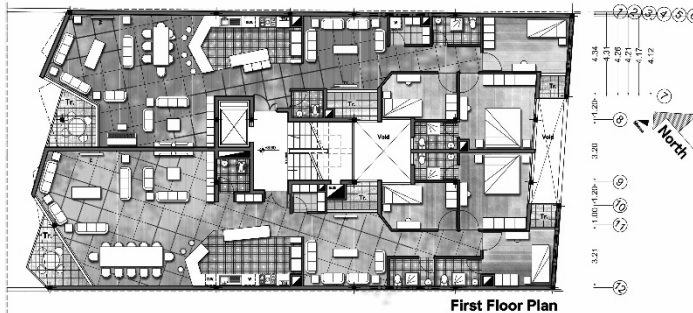
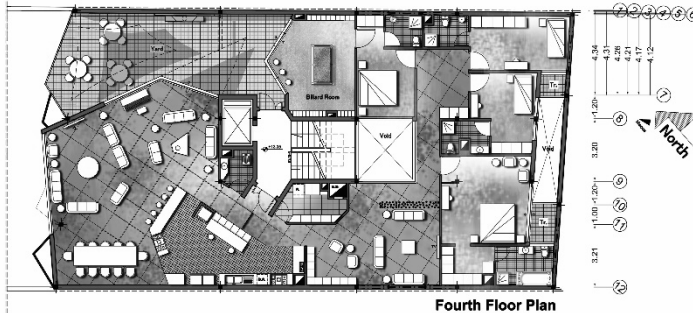


**Adasha Residential Bldg.,** Khakshenasi St., Shiraz, IRAN.

January 2015, as continuation of the cooperation with *P.A.P. Consulting Engineers*, This building was designed as a residential building with 8 apartment units. Shaping the meaning of being peerless white-gemstone was the chosen main concept which was used to form design steps.

**Client:** Adasha-Shemtoob-Shayesteh

**Area:** 2348 m<sup>2</sup>





## Mohajer Touristic Residential Complex, Kourdeh Village, Lar City, Fars, IRAN.

January 2015, a touristic residential complex contains 46 residential units designed. Focusing on the wind direction, site vegetation and its compatibility with climate and preparing combined directions, pedestrian areas and bike path with green spaces were main goals. Besides that, tried to provide privacy of residents specially. **Client:** Mohajer Sharif, Area: 69617 m<sup>2</sup>







P.A.P. Consulting Engineers

# DORMITORY COMPLEX

Architectural Portfolio - May 2015 -



## Kish Island Dormitory Complex, Kish Island, IRAN

February 2015, during master degree at Tehran University and passing Architectural Design studio III course this project defined as a dormitory complex related to Kish Island University to be occupied by 100 students. In the course of designing, preparing student privacy along with open social spaces to approach freshness and abstinence depression was main concept, it was continued by matching green spaces with students' daily activities,

**Area: 18454 m<sup>2</sup>**







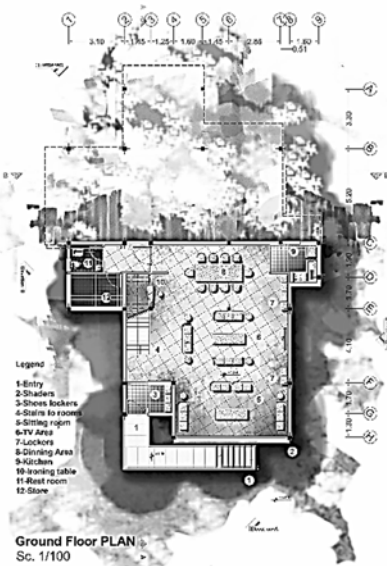
P.A.P. Consulting Engineers

# DORMITORY COMPLEX

Architectural Portfolio - May 2015



Elevation  
Sc. 1/100



Ground Floor PLAN  
Sc. 1/100



First Floor PLAN  
Sc. 1/100







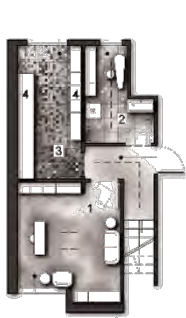
P.A.P. Consulting Engineers

# SALAMATIAN HOUSE

Architectural Portfolio - January 2016 -

**Salamatian House**, Sattarkhan St., Shiraz, IRAN.

April 2015, Engaging with an interior architecture project occurred during corporation with P.A.P. Consulting engineers was This Project story. The project defined as renovation a house belonged to a family with four members, designing was focused on shaping the spaces without damaging privacies, spaces such as sitting room, living room, four bedrooms, quest room, office room, library area, fireplace space and etc., while creating pure space details was the main design concept like creating unique handmade lighting elements, sculptures and multi-function Artworks. **Client:** H. Salamatian **Area:** 350 m<sup>2</sup>



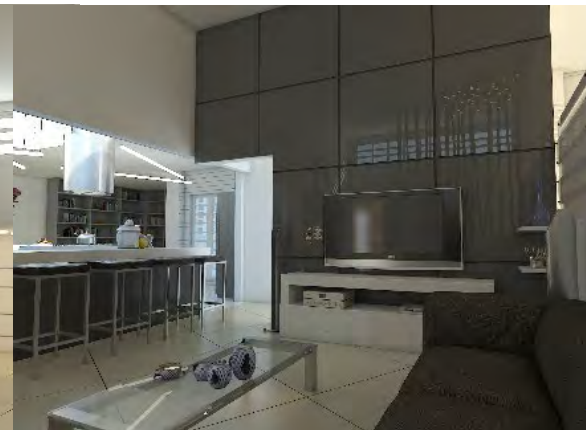
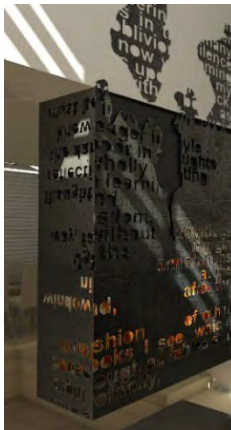
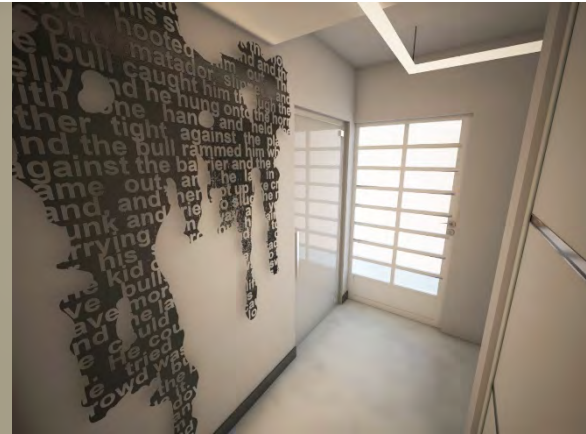
**BASEMENT PLAN**



**GROUND FLOOR PLAN**



**First Floor Plan**



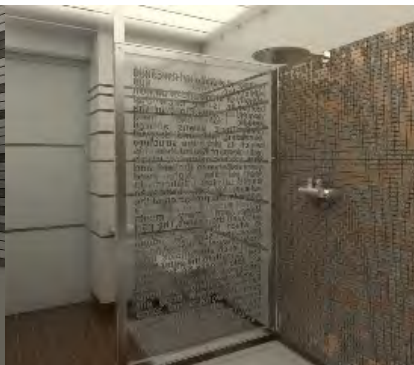




P.A.P. Consulting Engineers

# SALAMATIAN HOUSE

Architectural Portfolio - January 2016 -







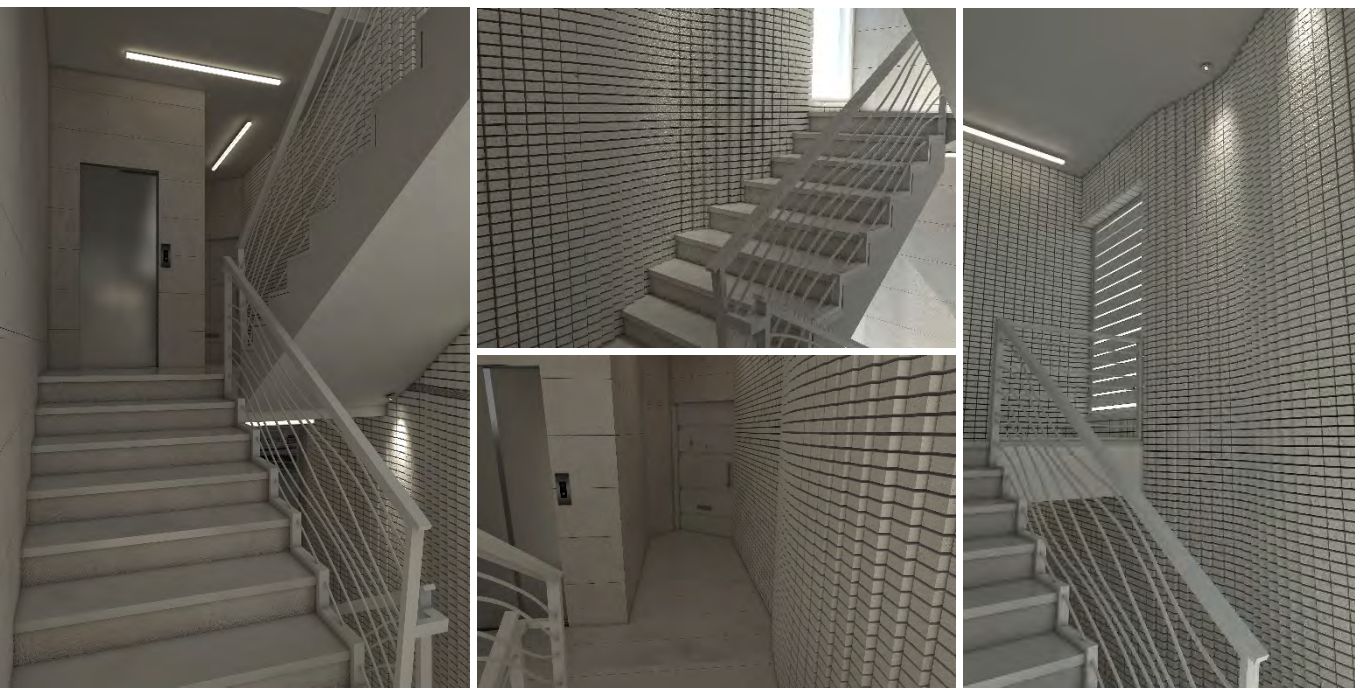
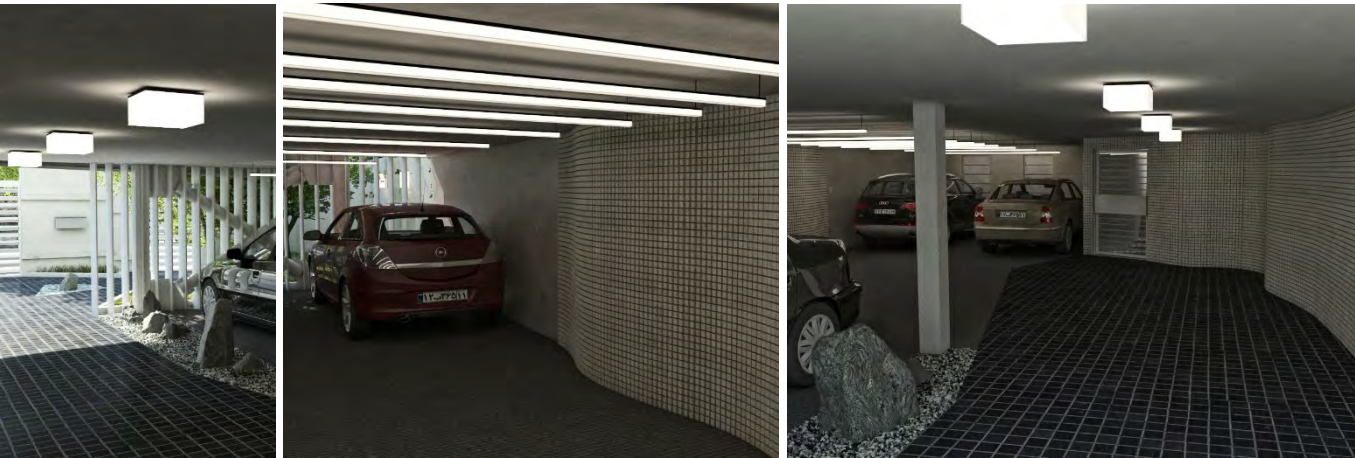
P.A.P. Consulting Engineers

# SHAYESTEH RESIDENTIAL BLDG.

Architectural Portfolio - January 2016 -

**Shayesteh Residential Bldg.**, Vesal St., Shiraz, IRAN.

According to former designed residential project, named Shayesteh Residential Bldg., its interior spaces shaped next goal of designing steps. During this part of design process like former, the context of project considered more than other aspects, because it was located at a place which was the time-local border between past eras and the start point of a wave-movement called "Transition Period" in Iranian architecture. Therefore, shaping the meaning of that wave formed a virgin concept. **Client:** Shayesteh, **Area:** 856 m<sup>2</sup>







P.A.P. Consulting Engineers

# SHAYESTEH RESIDENTIAL BLDG.

Architectural Portfolio - January 2016 -

